

Industrial Serial Device Server

CSE-H25 User's Manual

Version 2.4



Sollae Systems Co., Ltd.

<https://www.ezTCP.com>



This symbol, found on your product or on its packaging, indicates that this product should not be treated as household waste when you wish to dispose of it. Instead, it should be handed over to an applicable collection point for the recycling of electrical and electronic equipment. By ensuring this product is disposed of correctly, you will help prevent potential negative consequences to the environment and human health, which could otherwise be caused by inappropriate disposal of this product. The recycling of materials will help to conserve natural resources. For more detailed information about the recycling of this product, please contact your local city office, household waste disposal service or the retail store where you purchased this product.

※ This equipment obtained certification by using 1.5M serial cable.

Note:

This equipment has been tested and found to comply with the limits for a Class A digital device, pursuant to part 15 of the FCC Rules. These limits are designed to provide reasonable protection against harmful interference when the equipment is operated in a commercial environment. This equipment generates, uses, and can radiate radio frequency energy and, if not installed and used in accordance with the instruction manual, may cause harmful interference to radio communications. Operation of this equipment in a residential area is likely to cause harmful interference in which case the user will be required to correct the interference at his own expense.

Contents

1	Overview	- 5 -
1.1	Overview	- 5 -
1.2	Application Examples	- 5 -
1.3	Specification	- 7 -
1.3.1	<i>Hardware</i>	- 7 -
1.3.2	<i>Software</i>	- 7 -
1.4	Interfaces	- 8 -
1.4.1	<i>Serial Interface</i>	- 8 -
1.4.2	<i>Ethernet Interface</i>	- 9 -
1.4.3	<i>Power</i>	- 9 -
1.5	System LED	- 10 -
1.5.1	<i>ISP Switch</i>	- 10 -
2	Installation and Test.....	- 11 -
2.1	Installation	- 11 -
2.1.1	<i>Setting Network Aera</i>	- 11 -
2.2	Simple Test	- 13 -
3	Configuration	- 16 -
3.1	Configuration with ezManager	- 16 -
3.1.1	<i>Configuration via LAN</i>	- 16 -
3.1.2	<i>Configuration via Serial</i>	- 17 -
3.2	AT command	- 18 -
4	Operation Modes	- 19 -
4.1	What is the Operation Mode?	- 19 -
4.2	How to entering each mode	- 19 -
4.3	Comparison of each mode	- 20 -
4.4	Normal Mode	- 20 -
4.5	Serial Configuration Mode	- 21 -
4.6	ISP Mode	- 21 -
4.6.1	<i>Upgrading Firmware</i>	- 21 -
4.6.2	<i>Revoking Security Options</i>	- 21 -
5	Communication Modes	- 22 -

5.1 TCP Server	- 22 -
5.1.1 Key parameters.....	- 22 -
5.1.2 Examples.....	- 23 -
5.2 TCP Client	- 26 -
5.2.1 Key parameters.....	- 26 -
5.2.2 Examples.....	- 27 -
5.3 AT Command	- 30 -
5.3.1 Key parameters.....	- 30 -
5.3.2 Examples.....	- 31 -
5.4 UDP	- 34 -
5.4.1 Key parameters.....	- 34 -
5.4.2 Examples.....	- 35 -
6 System Management.....	- 37 -
6.1 Upgrading Firmware.....	- 37 -
6.1.1 Firmware	- 37 -
6.1.2 Processes.....	- 37 -
6.2 Status Monitoring.....	- 38 -
6.2.1 Using TELNET.....	- 38 -
6.2.2 Using ezManager.....	- 40 -
6.2.3 Debugging Message.....	- 43 -
7 Additional Functions.....	- 45 -
7.1 Access Restriction	- 45 -
7.1.1 Restriction of Access (ezTCP Firewall).....	- 45 -
7.1.2 Setting Password.....	- 45 -
7.2 Notify IP Change.....	- 46 -
7.3 Sending MAC Address.....	- 47 -
7.4 TELNET COM port Control Option (RFC 2217).....	- 47 -
7.5 Separator.....	- 48 -
7.6 SSL (Secure Socket Layer).....	- 49 -
7.6.1 How to use as a TCP client.....	- 49 -
7.6.2 How to use as a TCP server.....	- 49 -
7.7 SSH (Secure Shell)	- 50 -
7.7.1 How to use.....	- 50 -
7.8 Multiple Connection	- 51 -
7.8.1 How to use.....	- 51 -
7.8.2 Diagram.....	- 51 -

8	Self-Test in Trouble	- 52 -
8.1	Searching problem with ezManager.....	- 52 -
8.2	Connection Problem over TCP/IP.....	- 53 -
8.3	Data Communication Problem on the Serial.....	- 54 -
9	Technical Support and Warranty	- 55 -
9.1	Technical Support	- 55 -
9.2	Warranty.....	- 55 -
9.2.1	<i>Refund</i>	- 55 -
9.2.2	<i>Free Repair Services</i>	- 55 -
9.2.3	<i>Charged Repair Services</i>	- 55 -
10	Precaution and Exemption from Liability	- 56 -
10.1	Precaution.....	- 56 -
10.2	Exemption from Liability.....	- 57 -
10.2.1	<i>English version</i>	- 57 -
10.2.2	<i>French version</i>	- 57 -
11	History	- 60 -

1 Overview

1.1 Overview

Almost all communication devices including PC are using serial transmission. In this type, devices send and receive data in the order of each byte. The serial communication is quite simple to implement but has weaknesses like short distance and hard maintenance.

CSE-H25 lets the serial devices connect to the Internet. To communicate on the Internet, devices should use TCP/IP protocol, so CSE-H25 processes the converting serial data to TCP/IP.

1.2 Application Examples

- 1:1 Connection with a PC

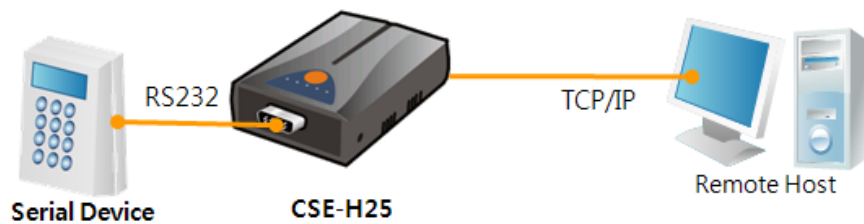


Fig 1-1 1:1 connection with a PC

- Applied to LANs

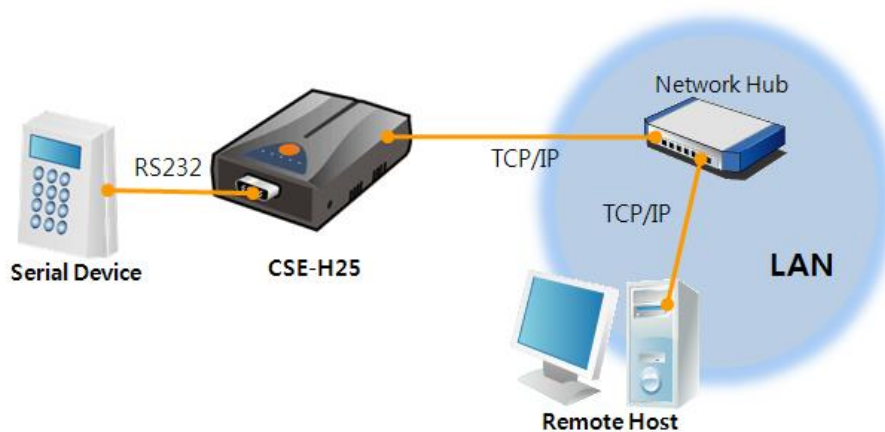


Fig 1-2 applied to LANs

- Applied to the Internet on Cable Networks

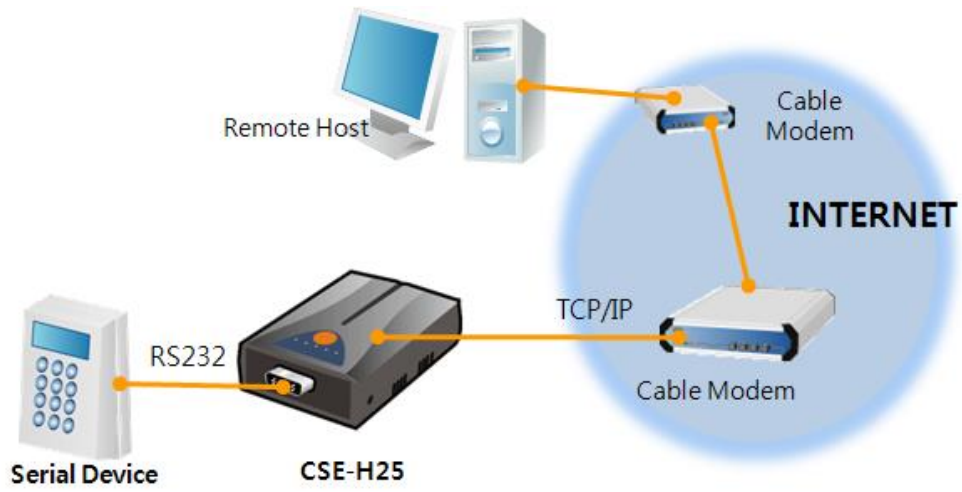


Fig 1-3 applied to the Internet on cable networks

- Applied to the Internet with an IP Share Router

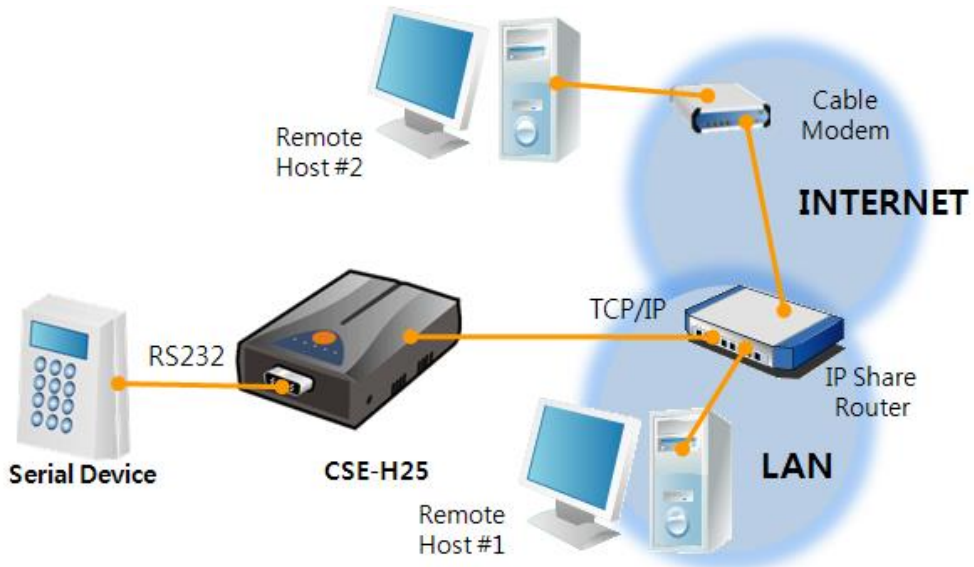


Fig 1-4 applied to the Internet with an IP share router

1.3 Specification

1.3.1 Hardware

Power	Input Voltage	DC 5V (±10%)
	Current	200mA typical
Dimension	89mm x 57mm x 24mm	
Weight	About 70g	
Serial Port	Serial	RS232 – RTS/CTS Flow Control (Baud Rate: 300bps ~ 230,400bps)
	Network	Ethernet 10Base-T or 100Base-TX (Auto-Sensing) Auto MDI / MDIX cable auto-sense
Temperature	Storage / Operating Temperature: -40 ~ 85°C	
Certification	CE: F690501/SP-EMY000211 / KCC: SLS-CSE-H25 (A)	
RoHS	RoHS Compliant	

Table 1-1 hardware specification

1.3.2 Software

Protocol	TCP, UDP, IP, ICMP, ARP, DHCP, PPPoE, Telnet, DNS Lookup, DDNS, TELNET COM port Control Option (RFC 2217), SSL, SSH	
Diagnose	Online Debugging Function	
Operation mode	Normal	For Normal Data Communication
	ISP	For Upgrading F/W
	Serial Configuration	For Configuration via Serial
Communication mode	TCP Server	TCP Passive Connection
	TCP Client	TCP Active Connection
	AT Command	TCP Passive / Active Connection
	UDP	UDP – No Connection
Major Utilities	ezManager	Configuration Utility for MS Windows (Supports Downloading F/W)
	ezVSP	Serial to TCP/IP Virtual driver for MS Windows

Table 1-2 software specification

1.4 Interfaces

1.4.1 Serial Interface

CSE-H25 has an RS232 port for user serial device (300bps ~ 230,400bps). CSE-H25 converts serial data from user device to TCP/IP and transmits to Ethernet port.

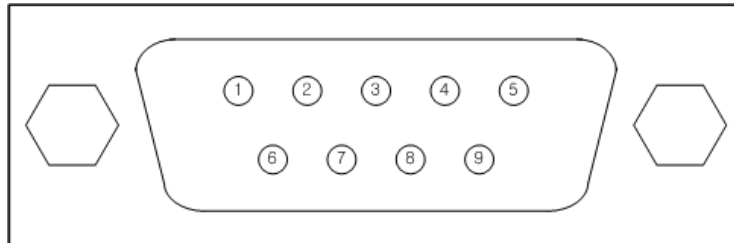


Fig 1-5 9 pins D-sub Male connector

- Pin Assignment

Number	Name	Description	Level	I/O	Wiring
1	DCD	Data Carrier Detect	RS232	In	Optional
2	RXD	Receive Data	RS232	In	Required
3	TXD	Transmit Data	RS232	Out	Required
4	DTR	Data Terminal Ready	RS232	Out	Optional
5	GND	Ground	Ground	-	Required
6	DSR	Data Set Ready	RS232	In	Optional
7	RTS	Request To Send	RS232	Out	Optional
8	CTS	Clear To Send	RS232	In	Optional
9	RI	Ring Indicator	RS232	In	Optional

Table 1-3 pin assignment of the RS232 port

1.4.2 Ethernet Interface

Since part of CSE-H25 network is composed of Ethernet, UTP cable may be connected. It will automatically sense 10Mbps or 100Mbps Ethernet and connect itself. It also provides auto MDI/MDIX function that can automatically sense 1:1 cable or cross over cable.

Each Ethernet device has its own unique hardware address. The hardware address of CSE-H25 is set in the factory before being shipped to the market. (The hardware address is also known as the MAC address)

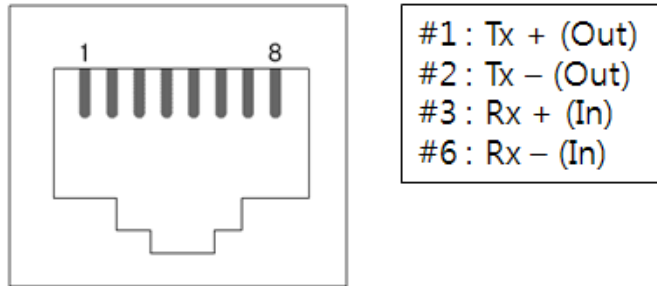


Fig 1-6 the Ethernet interface

1.4.3 Power

DC5V is used for the power. The specifications of the power jack are as the following:

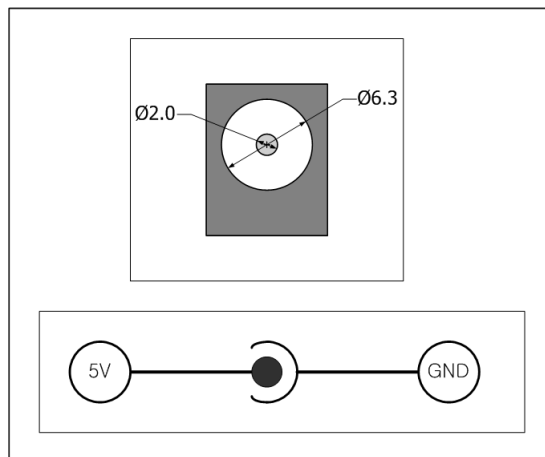


Fig 1-7 power connector

1.5 System LED

CSE-H25 has several lamps to show the current system status.

Each lamp shows the following status:

Mode	Name	Color	Status	Description
Common	PWR	Red	On	Supplying the power
	LINK	Green	On	Connecting with Ethernet
	RXD	Yellow	Blinks	Receiving data from the Ethernet
	TXD	Green	Blinks	Sending data to the Ethernet
Normal mode	STS	Yellow	Blinks in every second	Obtaining an IP address
			Blinks 4 times at once	Without obtaining an IP address under DHCP or PPPoE network
ISP mode	STS	Yellow	Off	Entering ISP mode
Serial Configuration mode	STS /RXD /TXD	-	Blinks simultaneously	Entering Serial Configuration mode

Table 1-4 status of the system LED

1.5.1 ISP Switch

There is a switch, which is named ISP switch (or button) located on the side of the product. You can change the operation mode of CSE-H25 to ISP or Serial Configuration mode with this switch.



Fig 1-8 ISP switch

2 Installation and Test

2.1 Installation

Before testing H25, users should connect both serial and Ethernet port to a PC. It will be no problem that the Ethernet connection includes network hubs.

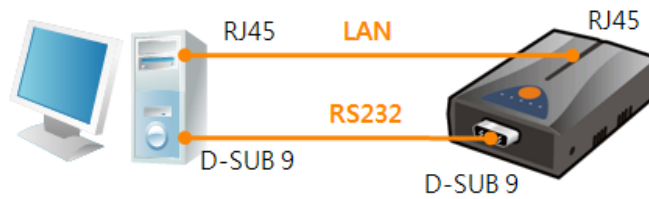


Fig 2-1 connection between H25 and a PC

Procedures for the test are followed.

2.1.1 Setting Network Area

This step is for setting both CSE-H25 and users' PC to be located the same network. If only they are, the TCP connection between them can be established.

- Setting of the PC

Add or change the IP address of the network adapter on your PC like following.

Get into the menu of [Windows Control Panel] >> [Network Connections] >> [Properties of the Network Adapter – with right click of your mouse]. Then, you can show the properties of [Internet Protocol (TCP/IP)]. In there, press the [Advanced..] button for adding an IP Address like the below figure.

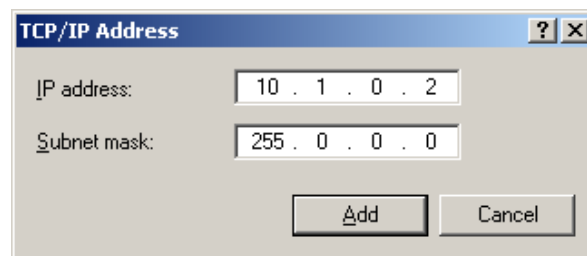


Fig 2-2 adding / changing the IP address of users' PC

- Setting of CSE-H25

CSE-H25 uses ezManager as it's a configuration program. ezManager is for MS Windows, and this is comfortable to use because it doesn't need installation. First, search your CSE-H25 via network. All the values of parameters are set the default values in the factory. To apply it to your system, proper values should be set via ezManager. Major parameters' default values are listed on below table. To implement this simple test, keep these values without any changes.

Name		Default Values
Network	Local IP Address	10.1.0.1
	Subnet Mask	255.0.0.0
Option	TELNET	Checked
	IP Address Search	Checked
Serial Port (COM1)	Serial Type	RS232
	Baud Rate	19,200bps
	Parity	NONE
	Data Bits	8
	Stop Bit	1
	Flow Control	NONE
	Communication mode	TCP Server
	Local Port	1470

Table 2-1 default values of Major parameters

☞ ***Users can download the latest version of ezManager on the [Download] >> [Major Utilities] board of our website.***

2.2 Simple Test

If you press the [Simple Test] button, test program will be shown on your screen.

- Connecting to the CSE-H25 via LAN

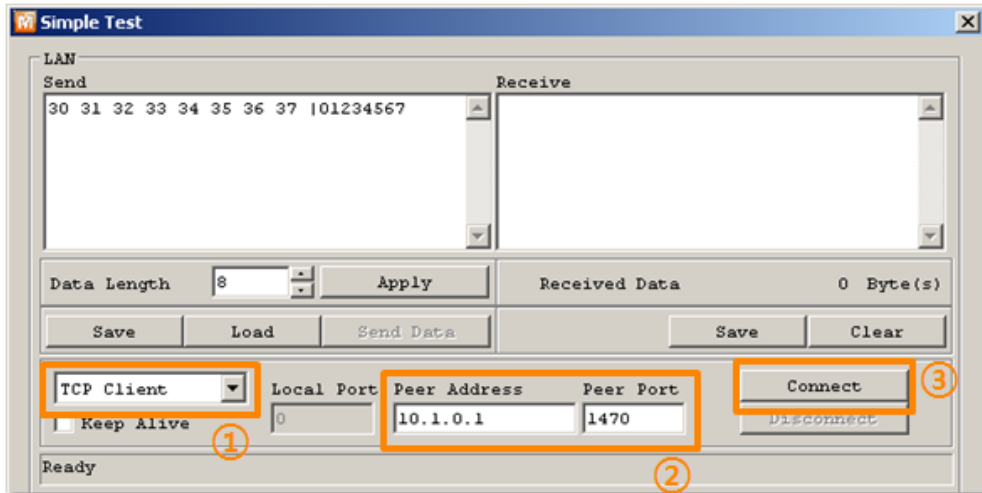


Fig 2-3 settings for TCP connection

- ① Select [TCP Client]
- ② Input correct IP address and port number of CSE-H25
- ③ Click the [Connect] button. (In case of TCP Server, it will be [Listen] button)

- Opening RS232 Port

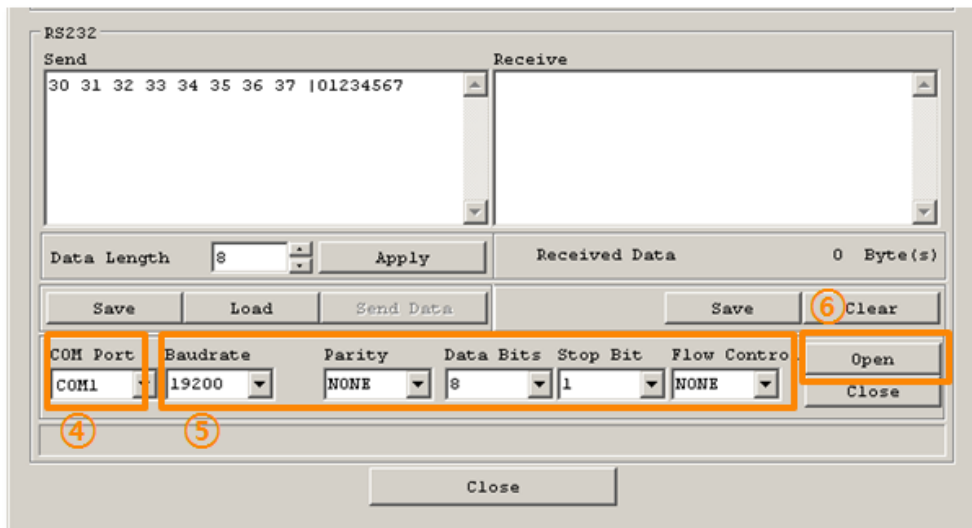


Fig 2-4 opening COM Port

- ④ Select COM port which the CSE-H25 is connected to
- ⑤ Make sure that all the parameters are the same with H25
- ⑥ Press the [Open] button

- Confirm the TCP Connection and COM port status

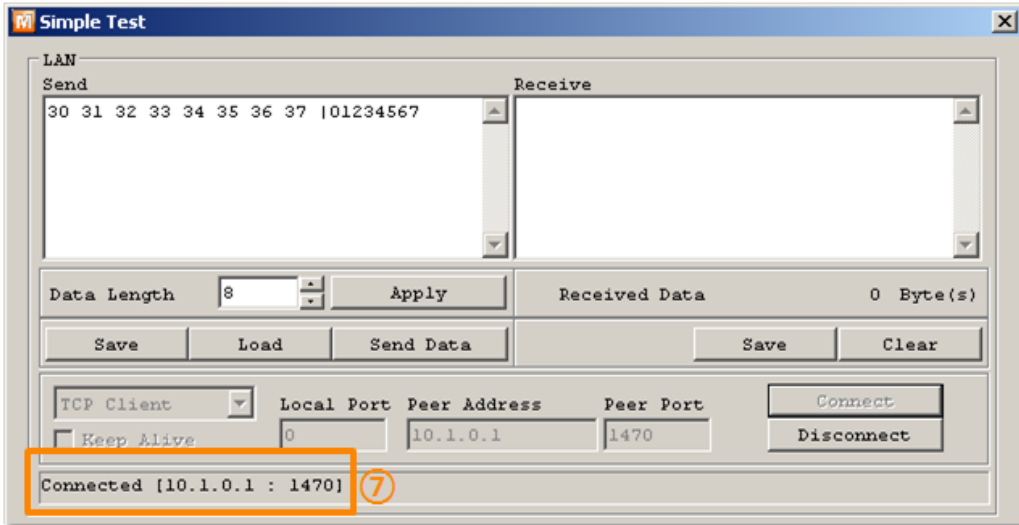


Fig 2-5 TCP Connected message

- ⑦ Check the message if the TCP connection is established

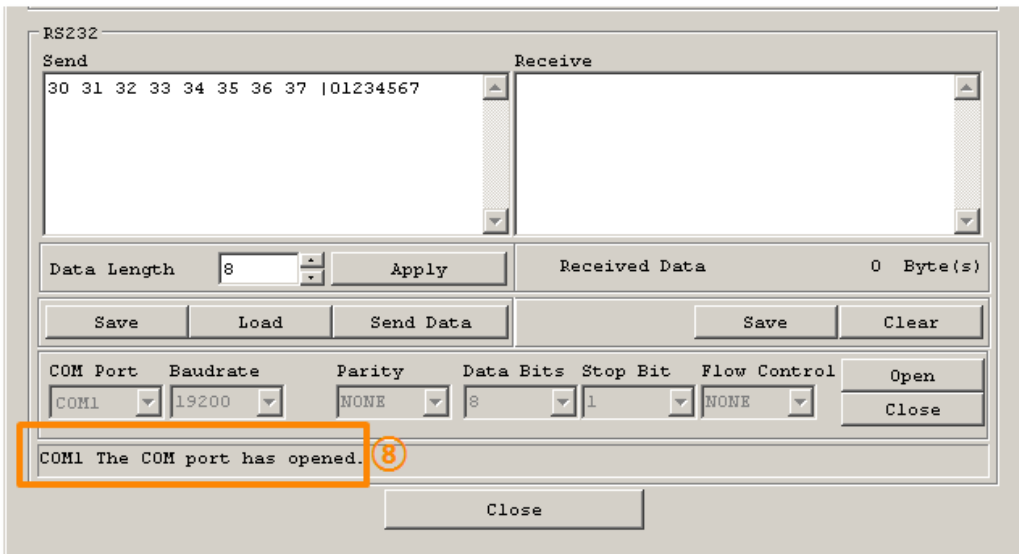


Fig 2-6 COM Port open message

- ⑧ Check the message if the COM port has been opened

- Data transmission test

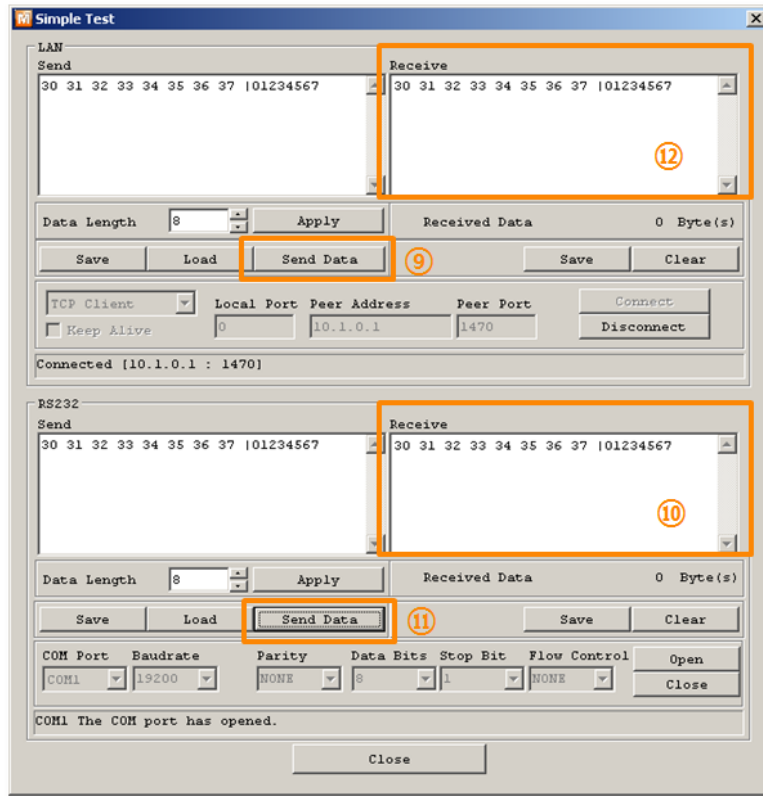


Fig 2-7 successful data transmission

- ⑨ Click the [Send data] on the LAN part
- ⑩ Check the data have been shown from the step ⑨

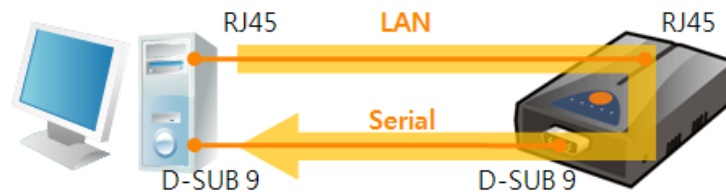


Fig 2-8 LAN → RS232

- ⑪ Press the [Send data] on the RS232 part
- ⑫ Check the data have been received from the step ⑪

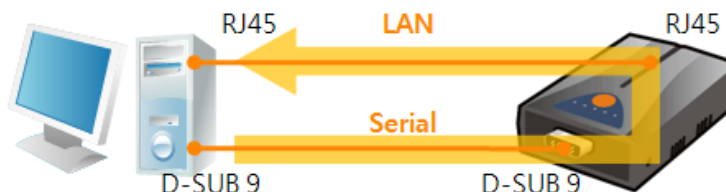


Fig 2-9 RS232 → LAN

3 Configuration

3.1 Configuration with ezManager

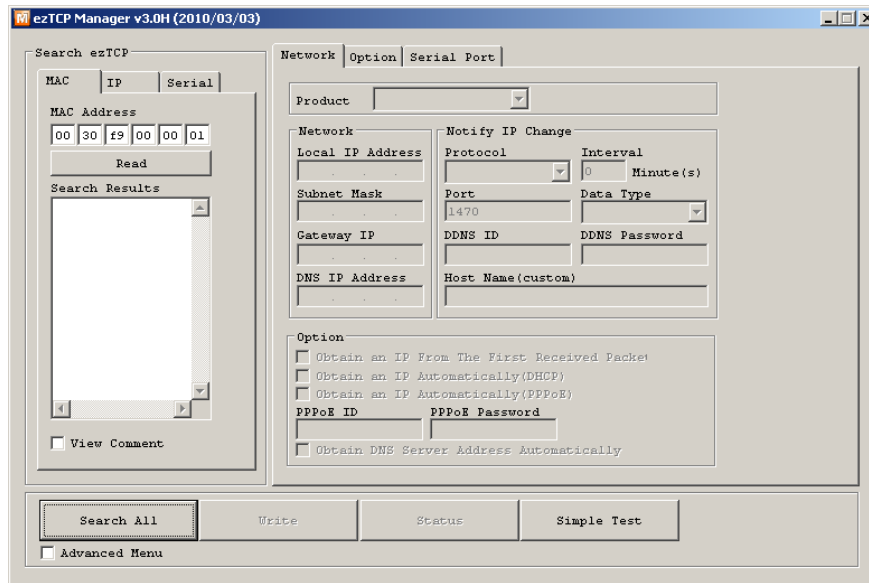


Fig 3-1 initial appearance of ezManager

3.1.1 Configuration via LAN

- Checklists

Make sure the connection between your PC and CSE-H25. If they are the same network, [MAC Address search] button can be used. If they aren't, only [IP Address search] is allowed to use.

- Procedures

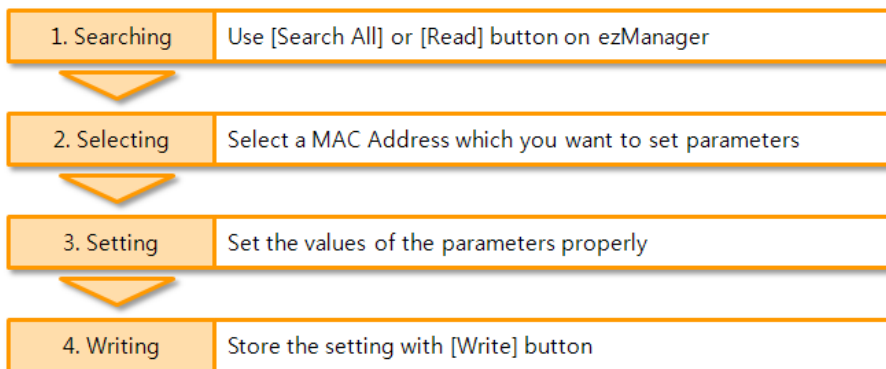


Fig 3-2 procedures for configuration via LAN

3.1.2 Configuration via Serial

- Checklists

Make sure the connection between your PC and CSE-H25 using RS232 cross cable. To use this, CSE-H25 has to be operating in the [Serial Configuration] mode. By pressing the ISP button less than 1 second, you can enter the mode. After this, read the setting via [Serial] tab on ezManager.

- Procedures

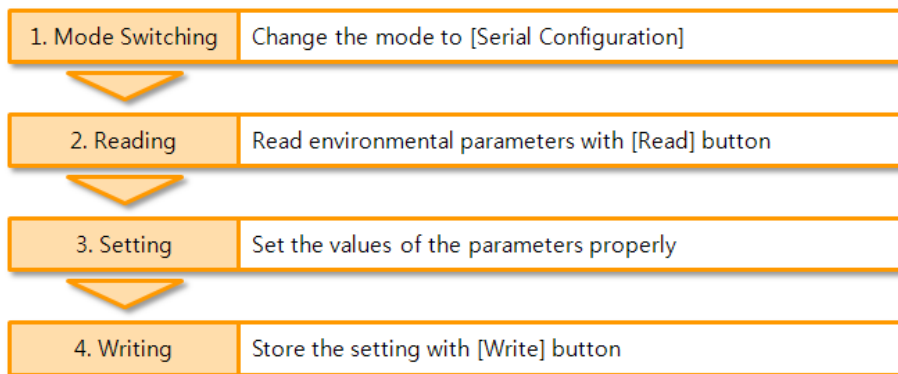


Fig 3-3 procedures for configuration via Serial

- Step 2, Reading

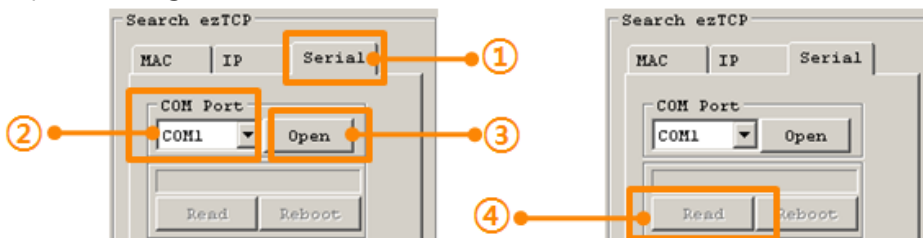


Fig 3-4 reading procedure via serial

- ① Choose the [Serial] tab
- ② Select the COM port which the H25 is connected with
- ③ Open the COM port with the [Open] button
- ④ Load the setting with [Read] button

☞ *If you want to know more specific manners of setting, please refer to the document "ezManager User Manual" on the [DOWNLOAD] >> [Major Utilities] >> [ezManager] page of our website.*

3.2 AT command

In the AT command mode, you can change some parameters through the serial port.

- Checklists

Make sure the connection between your PC and CSE-H25 using RS232 cross cable. To use this, CSE-H25 has to be set to [AT command] mode as its communication mode. This can be configured by ezManager.

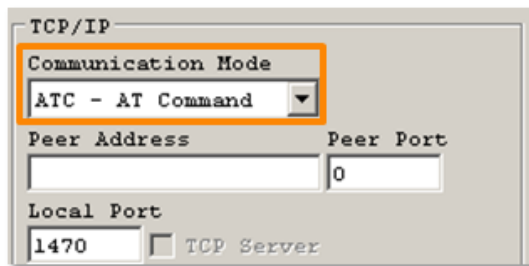


Fig 3-5 setting the communication mode to the AT command

- Procedures

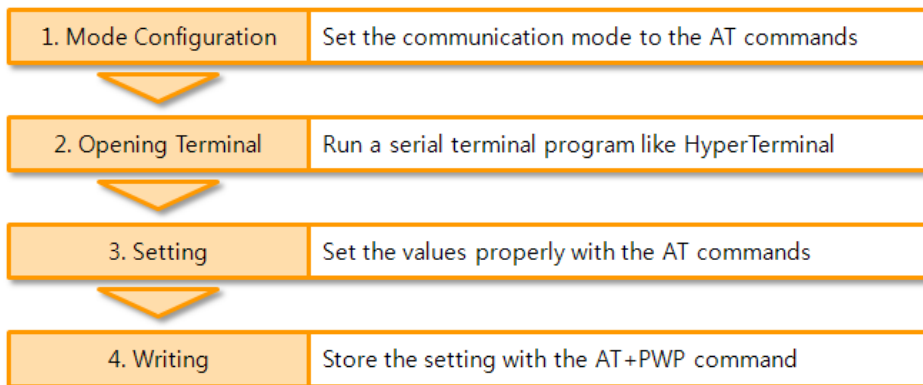


Fig 3-6 procedures for configuration with AT command

Division	Available parameters
IP Address related items	Local IP Address, DHCP, PPPoE, Subnet Mask, Gateway IP Address, DNS IP Address, ...
TCP connection related items	Local Port, Peer Address (IP Address or Host name), Peer Port, ...
Option	ESC code sending option, timeout, ...

Table 3-1 parameters which are available to change with AT command

☞ ***Including above items, rest of parameters can be set by ezManager***

4 Operation Modes

4.1 What is the Operation Mode?

Each of three operation mode of CSE-H25 is defined for specific purpose, and those are followed.

- Normal mode
This mode is for normal data communication and has 4 different connection modes. Configuring parameters is also available in this mode.
- Serial configuration mode
This mode is for configuring environmental parameters through the RS-232 port.
- ISP mode
This mode is for upgrading firmware. In addition, you can set environmental parameters even though the security options like password are activated by entering this mode.

4.2 How to entering each mode

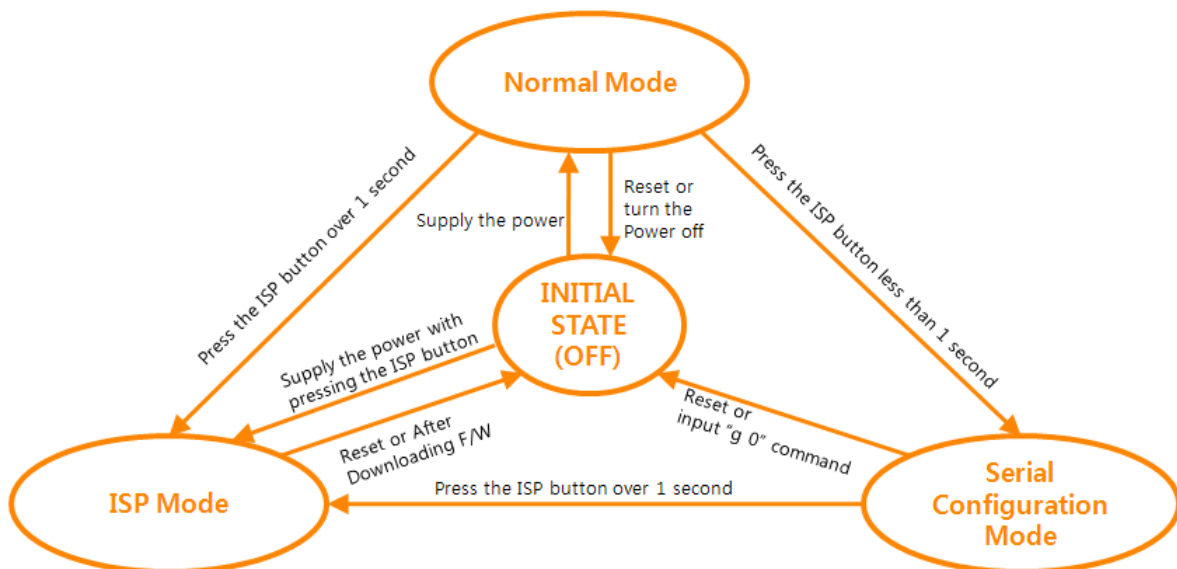


Fig 4-1 How to entering each mode

4.3 Comparison of each mode

The following table shows summaries of each mode

Name	Entering	Serial port
Normal	Supply the power.	configured value
Serial Configuration	Press the ISP button shortly between 10ms and 1s.	115200/N/8/1
ISP	Supply the power with pressing the ISP button or press the ISP button over 1 sec, in other modes.	115200/N/8/1

Table 4-1 comparison of each mode

4.4 Normal Mode

In normal mode, there are four connection types to communication with a remote host.

- TCP Server
- TCP Client
- AT Command
- UDP

Name	Protocol	Connection	Modifying software of serial devices	Serial configuration	Topology
TCP Server	TCP	Passive	-	Unavailable	1:1
TCP Client		Active	-	Unavailable	1:1
AT Command		Either	Required	Available	1:1
UDP	UDP	-	-	Unavailable	N:M

Table 4-2 comparison of four communication modes

TCP is a type of protocol, which has a process of connection. The connection has to be one to one. The part who tries to make the connection is called TCP Client, and the other part is TCP Server. On the other hand, UDP has no connection process. Because of this, each of them can be send and receive data from multiple hosts.

4.5 Serial Configuration Mode

This is a mode for setting environmental parameters through RS232 port. If you can't use the Ethernet, this mode is only way to configure the values. Once entering this mode, use the [Read] button on the [Serial] tab of ezManager.

4.6 ISP Mode

You can enter this mode by pressing the ISP button over 1 second. There are two special purposes in this mode.

4.6.1 Upgrading Firmware

ISP mode is for upgrading firmware which is offered by us. The upgrade is implemented on Ethernet.

☞ ***The details are followed in the "6.1 Upgrading Firmware".***

4.6.2 Revoking Security Options

CSE-H25 offers restriction methods for security like filtering password or MAC and IP address. In the ISP mode, you can revoke all of these. When you forgot the password, enter the ISP mode to solve the problem.

5 Communication Modes

5.1 TCP Server

In this mode, CSE-H25 functions as a TCP server. CSE-H25 listens to a TCP connection from remote host. Once a host tries to connect to CSE-H25, it responds that request. After the connection is established, CSE-H25 converts the raw data from the serial port to TCP/IP data and sends them to the network and vice versa.

5.1.1 Key parameters

- Local Port

This is a server's port number which is used in the TCP connection.

- Event Byte

With setting event bytes, users can handle the serial data before a TCP connection is established.

Value	Description
0	CSE-H25 doesn't send the data
Otherwise (512 or under)	CSE-H25 sends the data right after a connection is established. 512 or under bytes are strongly recommended.

Table 5-1 Event Byte

- Timeout

If there is no transmission of data for amount of time which is set to this parameter, CSE-H25 tries to terminate established TCP connection.

- Notify IP Change

This function is for notifying information about changed IP address to a server. Not only the TCP/UDP protocol but Dynamic Domain Name Service (DDNS) can be used.

- Restriction of Access

Users can block TCP connections from unauthorized hosts by using this option. Both IP and MAC address are available.

5.1.2 Examples

- A situation that [Event Byte] is set to 0.

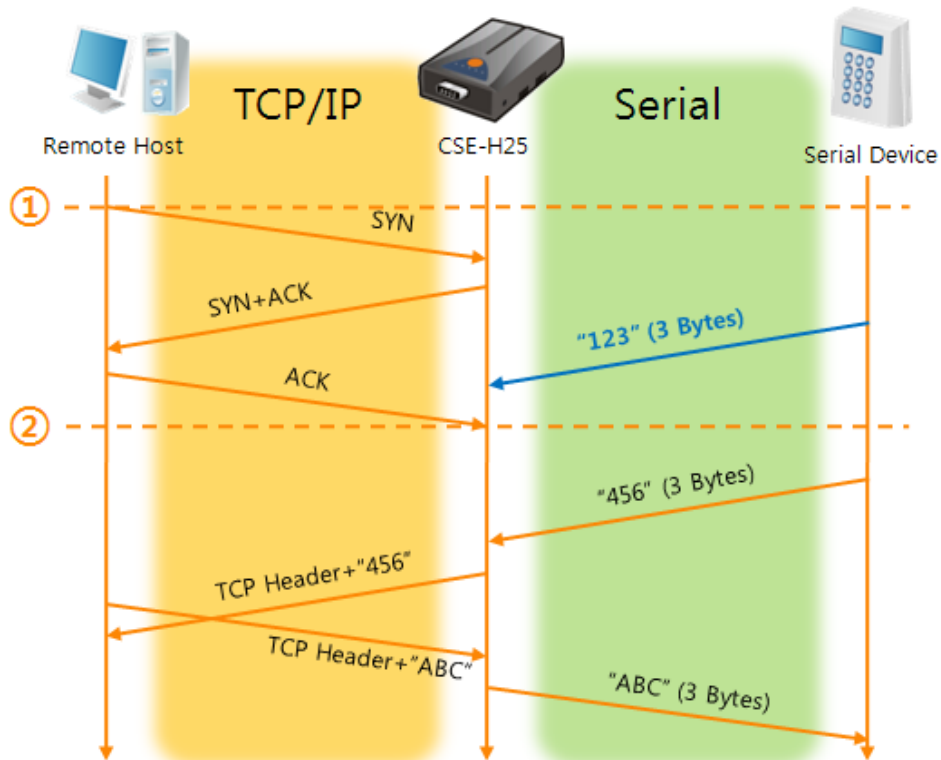


Fig 5-1 time chart for a situation that [Event Byte] is set to zero

Points	States
~	H25 is listening to connection requests
①	Remote host has sent a connection request (SYN) segment
~	Processes of the connection
②	The connection has been established
~	Data communication on both sides

Table 5-2 states of each points

Look at the blue arrow. The data "123" from the serial port had sent before the connection is established. In this case, the data wasn't sent because of the [Event Byte] is set to 0

- A situation that [Event Byte] is set to 1.

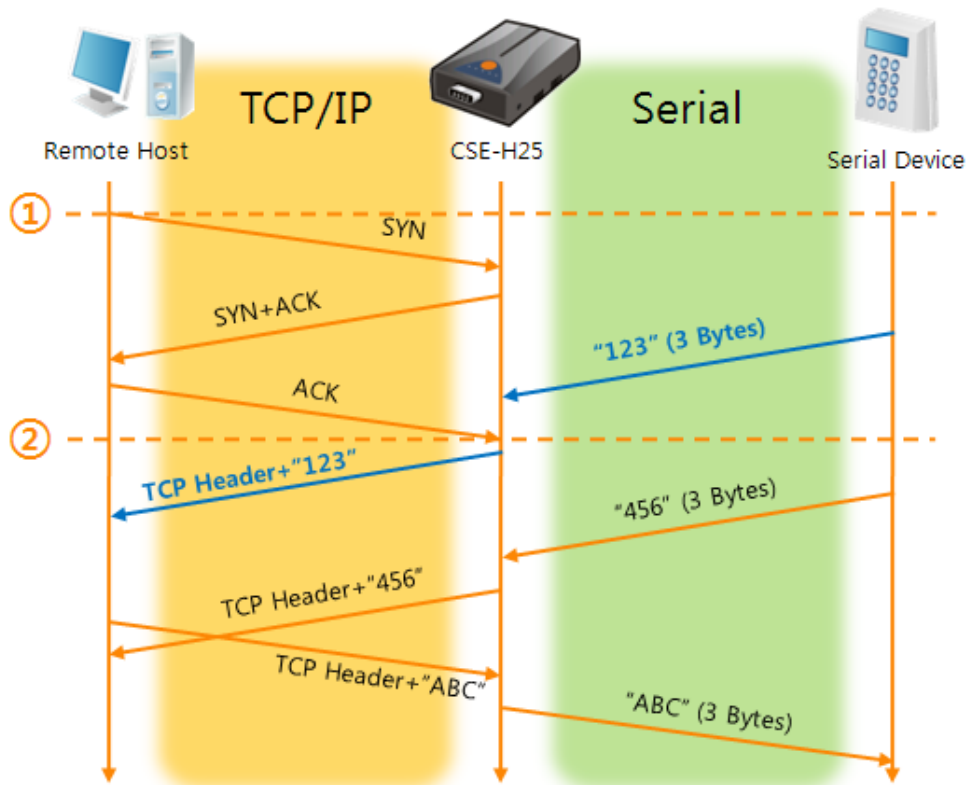


Fig 5-2 time chart for a situation that [Event Byte] is set to 1

Points	States
~	H25 is listening to connection requests
①	Remote host has sent a connection request (SYN) segment
~	Processes of the connection
②	The connection has been established
~	The data "123" has been sent right after the end of connection processes

Table 5-3 states of each points

As you can see, the data "123" has been sent right after the connection is established because the value of [Event Byte] had been set to 1. If the value is not 0, the result is the same as above example.

- A situation that [Timeout] is set to 5.

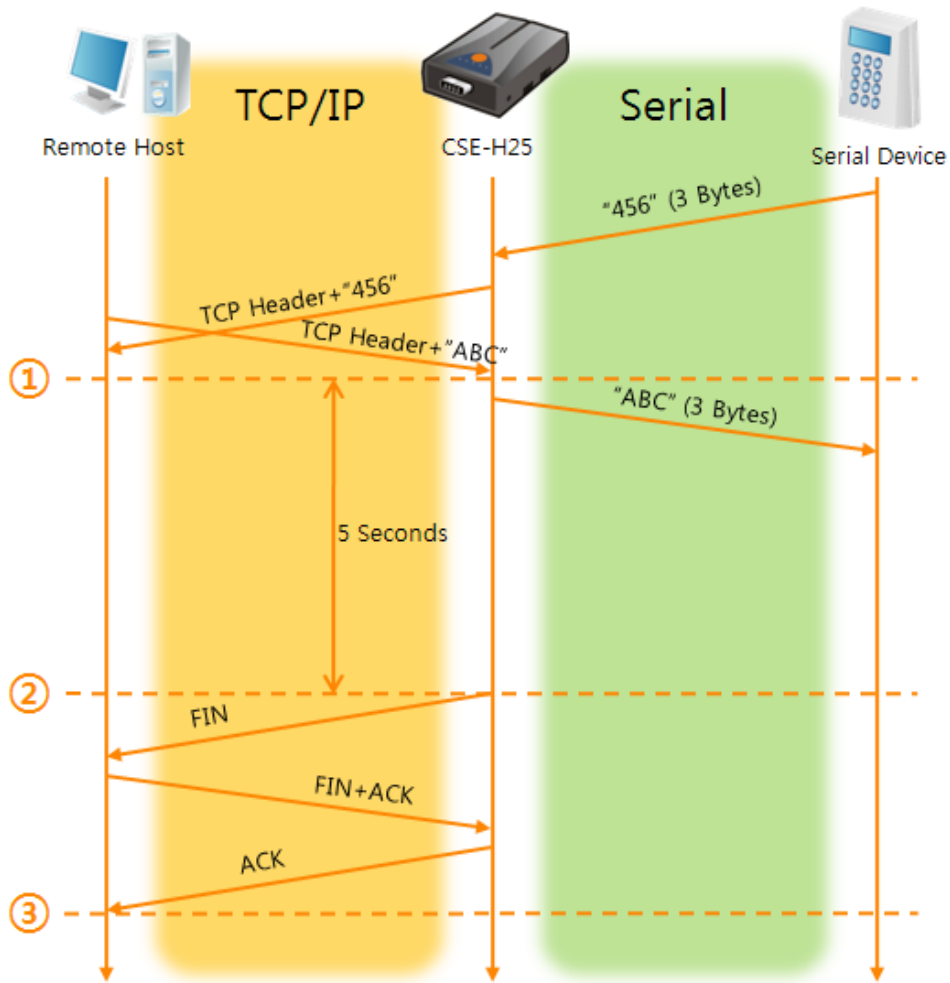


Fig 5-3 time chart for a situation that [Timeout] is set to 5

Points	States
~	Data communication on both sides
①	The last segment has been arrived at the H25
~	5 seconds are passed with no data communication
②	H25 has sent disconnection request (FIN) to a remote host
~	Processes of the disconnection
③	The connection has been terminated
~	H25 is listening to connection requests

Table 5-4 states of each points

5.2 TCP Client

In this mode, CSE-H25 functions as a TCP client. CSE-H25 sends request segments to a remote host with information of [Peer Address] and [Peer Port]. Once a host is listening and works correctly, the connection will be established. After then, CSE-H25 converts the raw data from the serial port to TCP/IP data and sends them to the network and vice versa.

5.2.1 Key parameters

- Peer Address
This item should be an address of a remote host who is listening TCP connections.

- Peer Port
[Peer Port] should be the port number which is designated by the remote host.

- Event Byte
CSE-H25 decides the time to send the connection request frame with this parameter.

Value	Description
0	H25 sends TCP connection request segment right after it boots up
Otherwise (512 or under)	H25 sends the segment right after it received amount of data which is set to the [Event Byte] from the serial port 512 or under bytes are strongly recommended.

Table 5-5 the operation of Event Byte 1

In addition, users can handle the serial data before a TCP connection is established with this parameter.

Value	Description
0	CSE-H25 doesn't send the data
Otherwise (512 or under)	CSE-H25 sends the data right after a connection is established. 512 or under bytes are strongly recommended.

Table 5-6 the operation of Event Byte 2

- Timeout
If there is no transmission of data for amount of time which is set to this parameter, CSE-H25 tries to terminate established TCP connection.
- TCP Server
This check option is enable the TCP server / client mode. In this mode, CSE-H25 can be operated as a TCP server or client without changing its setting.
- DNS IP Address
[DNS IP Address] needs when you use host name instead of the IP address.

5.2.2 Examples

- A situation that [Event Byte] is set to 0.

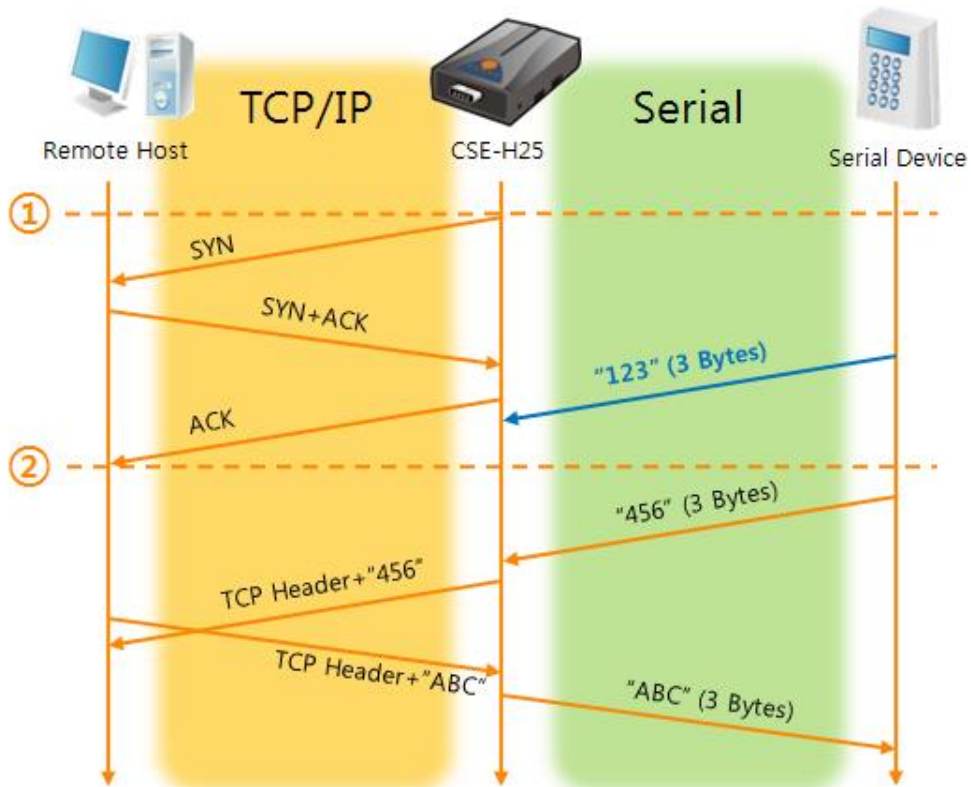


Fig 5-4 time chart for a situation that [Event Byte] is set to 0

Points	States
~	Before the power is supplied
①	Sends TCP connection request segment right after it boots up
~	Processes of the disconnection
②	The connection has been established
~	Data communication on both sides

Table 5-7 states of each points

Look at the blue arrow. The data "123" from the serial port had sent before the connection is established. In this case, the data wasn't sent because of the [Event Byte] is set to 0

- A situation that [Event Byte] is set to 5.

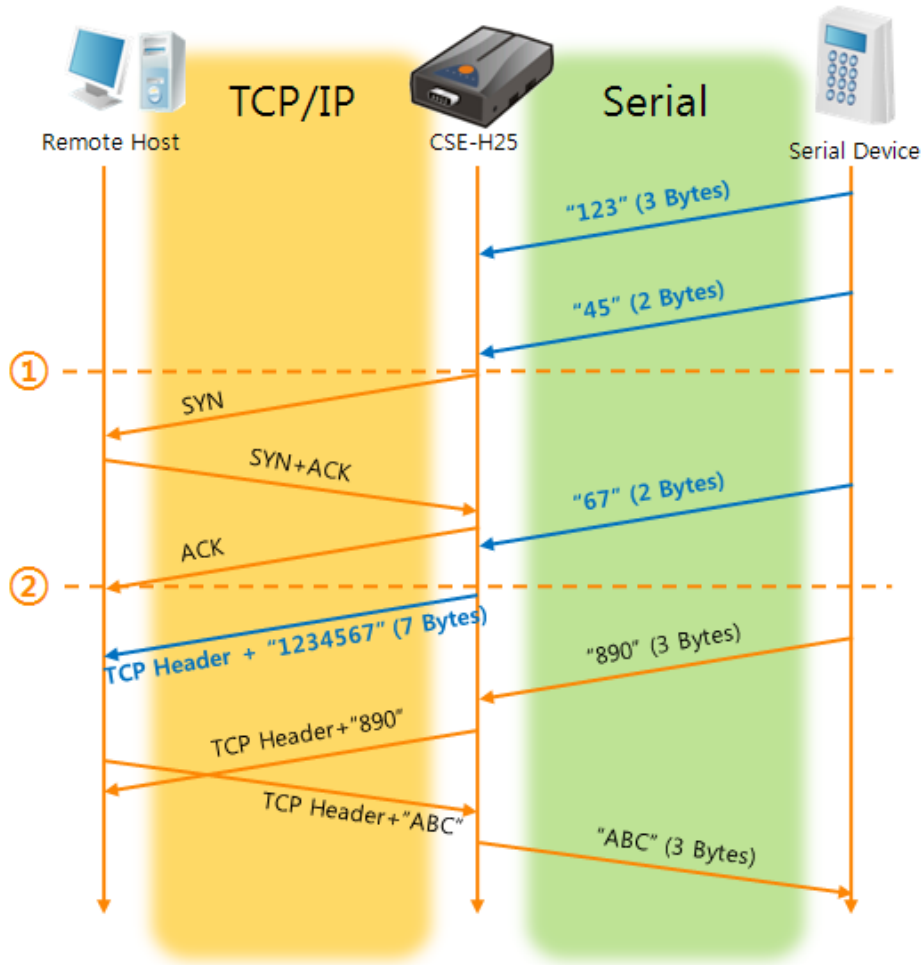


Fig 5-5 time chart for a situation that [Event Byte] is set to 5

Points	States
~	CSE-H25 has receives data from its serial port until the amount of data is 5 bytes
①	Sends connection request segment right after receiving 5 bytes.
~	Processes of the TCP connection
②	The connection has been established
~	The "1234567" is transmitted to the remote host

Table 5-8 states of each points

As you can see in the figure 5-5, CSE-H25 sends request segment right after the serial data had been 5 bytes. Even though those are come before the connection is established, the data "123", "45" and "67" are transmitted to the remote host because of the [Event Byte] is set to 5.

- An activated [TCP Server] option

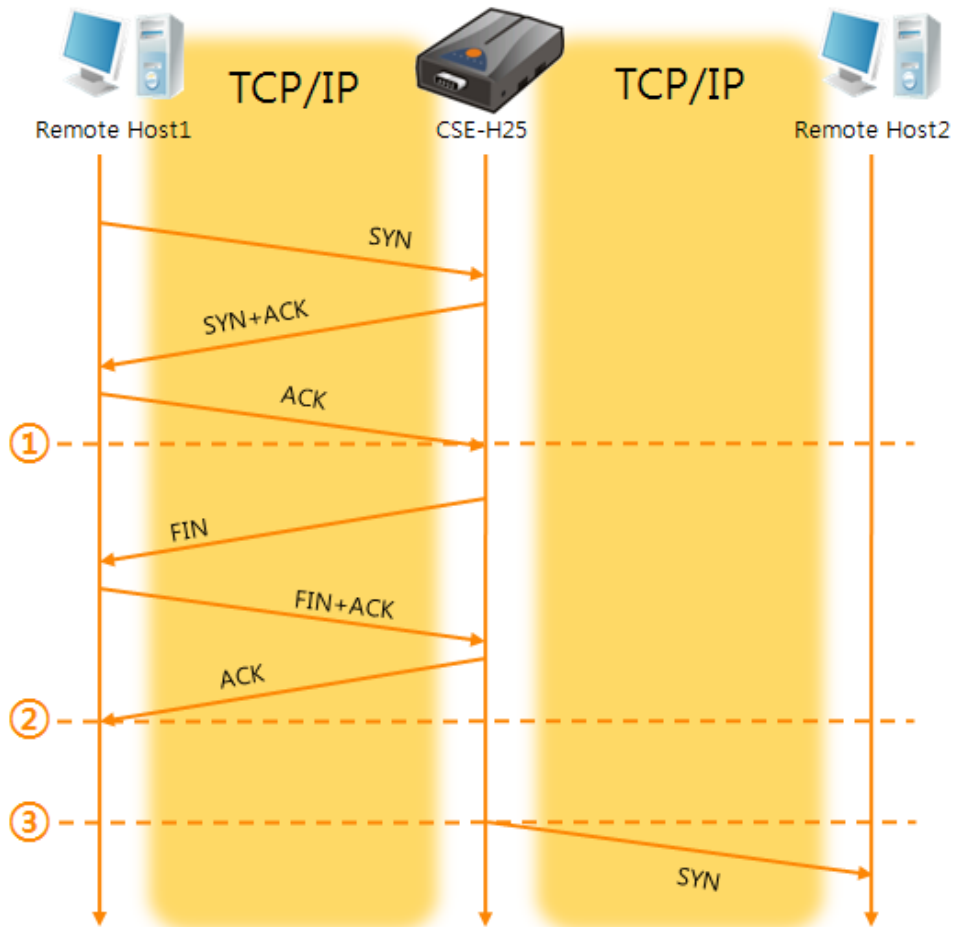


Fig 5-6 time chart for activating [TCP Server] option

Points	States
~	H25 is listening to connection requests
①	The connection has been established
~	H25 is on line and processes of the disconnection
②	The connection has been terminated
~	Both sides are offline
③	Sends TCP connection request segment

Table 5-9 states of each points

The TCP Server / Client mode can be useful option by using [Event Byte] and [Timeout]. Note that only one TCP connection can be established at the same time, so users should consider setting [Timeout] properly.

5.3 AT Command

AT command is a mode which users control CSE-H25 with AT command like controlling modem. In this mode, active and passive TCP connections are available. And users are allowed to configure some environmental parameters with extended commands.

5.3.1 Key parameters

The configuration should be implemented via the serial port of H25

Commands	Description	Examples
+PLIP	Local IP Address	at+plip=10.1.0.1<CR>
+PLP	Local Port	at+plp=1470<CR>
+PRIP	Peer IP Address	at+prip=10.1.0.2<CR>
+PRP	Peer Port	at+prp=1470<CR>
+PDC	DHCP	at+pdc=1 (ON)<CR>
+PPE	PPPoE	at+ppe=1 (ON)<CR>
+PTO	Timeout	at+pto=10<CR>
+PWP	Store setting	at+pwp<CR>

Table 5-10 some of extended commands for configuration

- Related items with IP Address and Local Port
Local port can be set as well as IP address related parameters like IP Address, Subnet Mask and Gateway IP Address.
- Peer Address / Peer Port
IP address and local port of a remote host are can be set.
- Type of assigning IP address: Manual, DHCP, PPPoE
Not only manual setting, also automatic assigning protocol (DHCP, PPPoE) are available.
- Others
Some of options including [Timeout] can be configured in this mode.

5.3.2 Examples

- TCP Server – setting parameters and passive connection

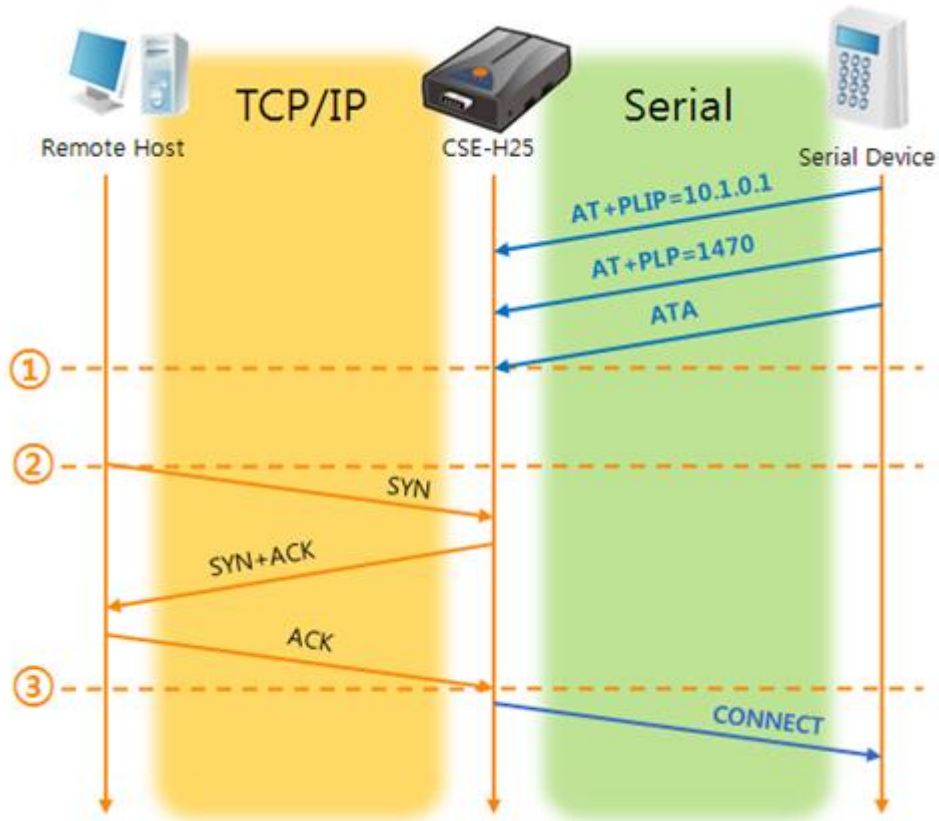


Fig 5-7 TCP passive connection

Points	States
~	Set parameters in the AT command mode
①	H25 listens TCP connection requests with the ATA command
~	H25 is listening TCP connection requests
②	A remote host has sent SYN segment to H25
~	Processes of TCP connection
③	TCP connection has been established
~	CSE-H25 sends "CONNECT" message to the serial port

Table 5-11 states of each points

☞ **Most of the response messages from the serial port of CSE-H25 are omitted on above figure.**

- TCP Client - setting parameters and active connection

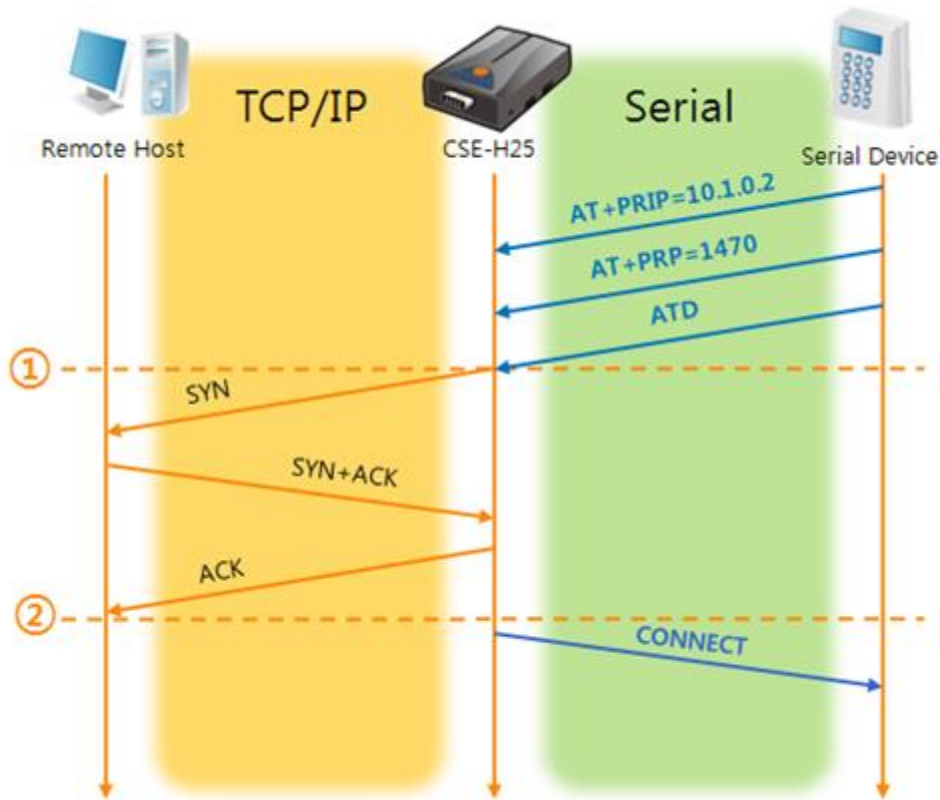


Fig 5-8 TCP Active connection

Points	States
~	Set parameters in the AT command mode
①	H25 sends a TCP connection request with the ATD command
~	Processes of TCP connection
②	TCP connection has been established
~	CSE-H25 sends "CONNECT" message to the serial port

Table 5-12 states of each points

- Termination of online status – entering the AT command mode

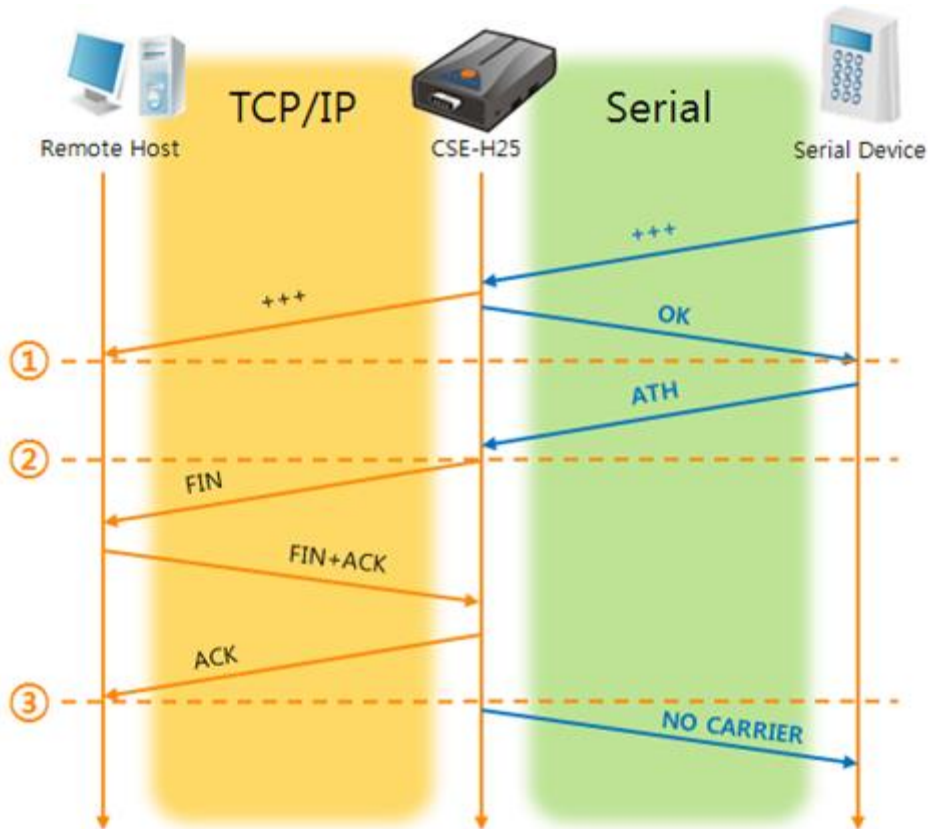


Fig 5-9 Termination of online status

Points	States
~	Keeps TCP connection
①	H25 enters the AT command mode with receiving "+++"
~	Keeps AC command mode
②	H25 terminates TCP connection with ATH command
~	Processes of TCP disconnection
③	TCP connection has been terminated
~	H25 sends "NO CARRIER" with disconnection

Table 5-13 states of each points

CSE-H25 changes the mode to AT command, when receiving "+++" and sending "OK" message. In this state, the communication with remote host is not possible because H25 processes only AT command. Whenever you want to go back to online state (TCP connection), use "ATO" command.

☞ ***For more information about this, please refer to the "ATC mode" document on the [DOWNLOAD] >> [Download] board of our web site.***

5.4 UDP

UDP has no processes of connection. In this mode, data is sent in block units. Therefore, data that comes through CSE-H25's serial port must be classified in block units to send it elsewhere.

5.4.1 Key parameters

- Block Size(Byte)

[Block Size(Byte)] means the size of a block in UDP mode. Its unit is byte. The size of bytes is come into the serial port, CSE-H25 sends them as one block to the network. The maximum value could be 1460 bytes.

- Data Frame

[Data Frame] means the time for gathering data to make one block. Its unit is 10ms. If there are no transmission during the time which is set to this value, CSE-H25 sends gathered data in the buffer as one block to the network.

☞ ***Please set this value to 11 or higher values for correct operation.***

☞ ***Once one of the parameters is sufficient, the block size is decided as the condition.***

- Dynamic update of Peer host

If users set the value of [Peer Address] and [Peer Port] to 0, [dynamic update of peer host] function is activated. By using this function, CSE-H25 can communicate to multiple hosts without additional setting.

5.4.2 Examples

- Block Size: 5 bytes / Data Frame: 1s (100 by 10ms)

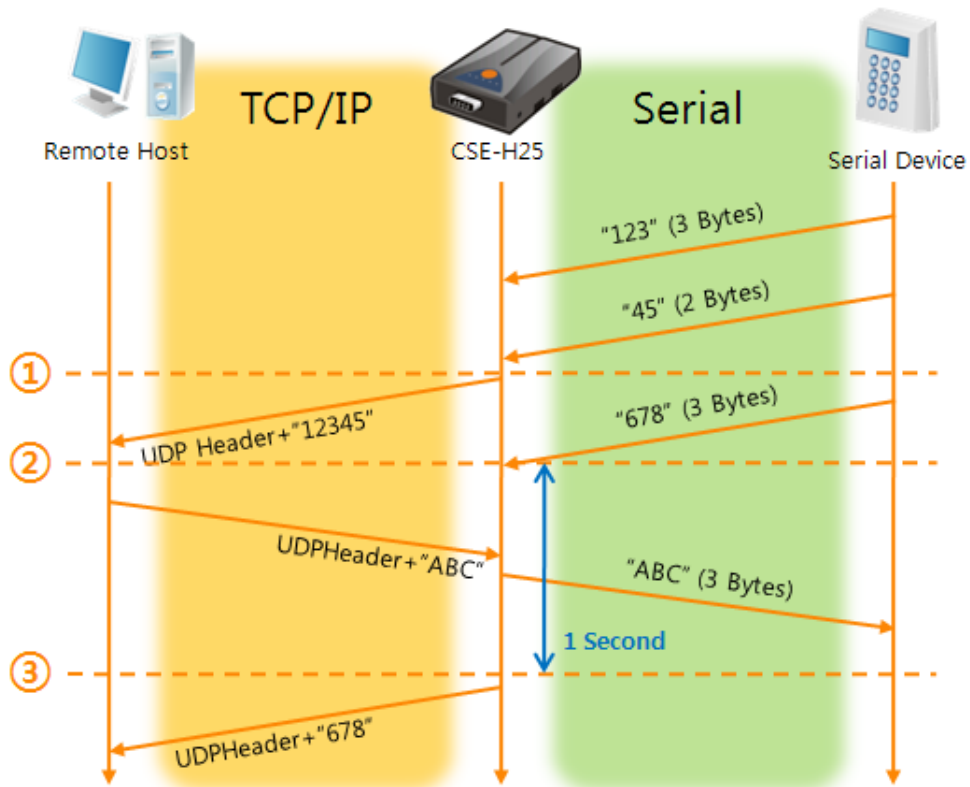


Fig 5-10 time chart for block size is 5 bytes and data frame is 1s

Points	States
~	H25 is receiving data from the serial port
①	H25 Sends 5 bytes as one block based on the [Block Size]
~	Serial device sends data "678" to the H25
②	Data "678" has arrived
~	H25 sends data from the remote host to the serial device
③	1 second has passed
~	H25 sends data "678" based on the [Data frame]

Table 5-14 states of each points

- Dynamic Update of Peer host

This is a function that CSE-H25 automatically sets its peer host with information of the last packet which is received from network. In the packet, the source address and port number is used.

Parameters	Values
Peer Address	0 (None)
Peer Port	0

Table 5-15 setting for [dynamic update of peer host] function

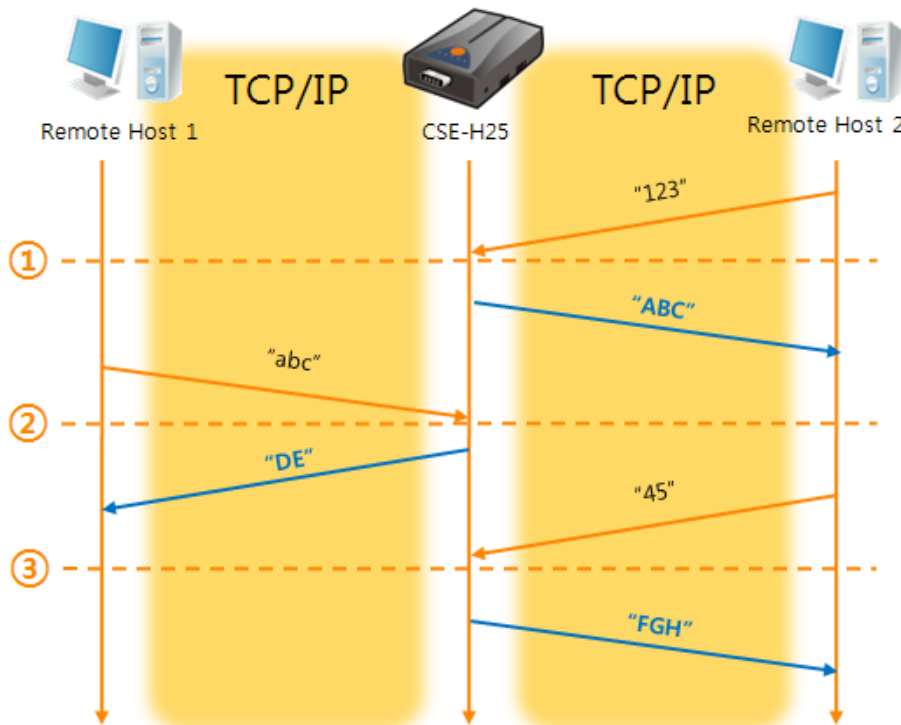


Fig 5-11 time chart for [dynamic update of peer host]

Points	States
~	Remote host 2 sends data to H25
①	H25 sets host 2 to peer host
~	Remote host 1 sends data to H25
②	H25 updates host 1 to peer host
~	Remote host 2 sends data again to H25
③	H25 updates host 2 to peer host
~	H25 can communicate with remote host 2

Table 5-16 states of each points

☞ **The data "ABC", "DE", "FGH" are from the serial port of CSE-H25 in the Fig 5-11.**

6 System Management

6.1 Upgrading Firmware

6.1.1 Firmware

Firmware is a type of software for operation of CSE-H25. If there are needs for adding function or fixing bugs, the firmware is modified and released. We recommend that users keep use the latest released firmware.

6.1.2 Processes

- Downloading the latest released firmware
Download the newest firmware file. We update our homepage when a new firmware is released. You can find it on our website.
- Entering ISP mode
Enter ISP mode to download firmware file to CSE-H25.
- Run a TFTP client and ready to send the F/W file
Run a TFTP client program. ezManager is equipped the client program. Click the [Change F/W / HTML] button.

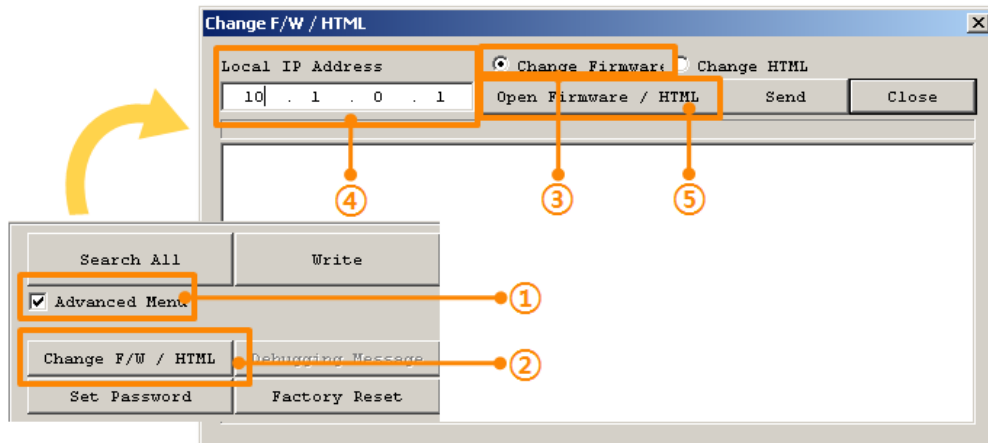


Fig 6-1 running TFTP client

- ① Check the [Advanced Menu] check box
- ② Click the [Change F/W / HTML] button to run TFTP client
- ③ Select the [Change Firmware] radio button
- ④ Input the IP address of CSE-H25 to the [Local IP Address] text box
- ⑤ Press the [Open Firmware / HTML] button and choose the firmware file

- Checking firmware file and Sending

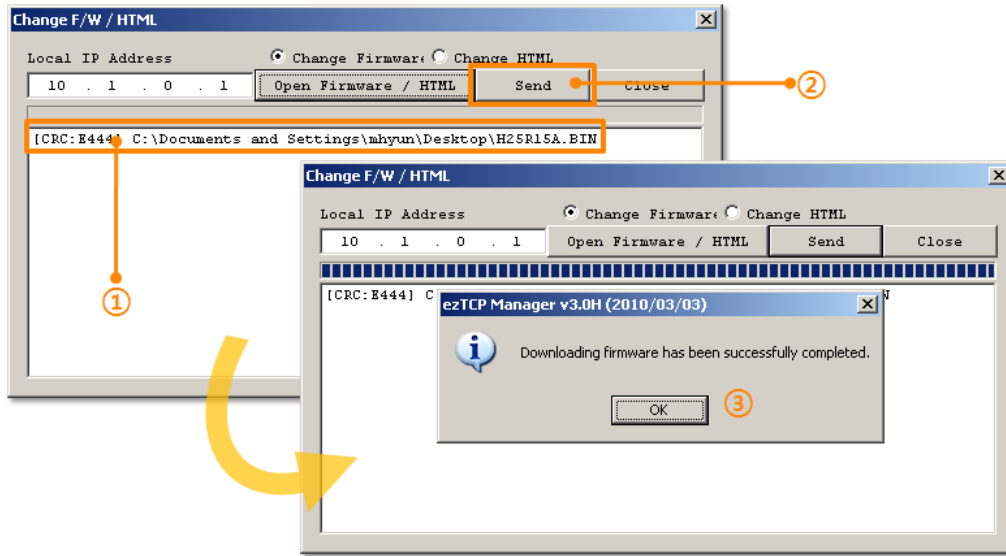


Fig 6-2 sending firmware file

- ① Check if the name and path of the firmware file are correct
- ② Click the [Send] button
- ③ Confirm the completed message

6.2 Status Monitoring

6.2.1 Using TELNET

Once the [TELNET] option is activated, users can remotely log in to CSE-H25. If a password is set, users should input the password.

- ☞ ***Starting with firmware version 2.0A, you can login by entering "sollae" without setting a password.***

After then, messages from CSE-H25 appear like Fig 6-3.

```
CSE-H25 Management Console v2.0A Sollae Systems
password: *****
lsh>
```

Fig 6-3 log in to CSE-H25 on TELNET

The following commands let users check each state.

Table 6-1 commands for checking states

Command	Option	Description	Usage
st	net	Network Status	lsh>st net
	sio	Serial Port Status	lsh>st sio
	uptime	System Uptime	lsh>st uptime
sc	[OP1][OP2]	Session Control	lsh>sc com1 close
sd	[OP1][OP2]	Serial Data Capture	lsh>sd 1 100
		Serial Data Capturing Stops	lsh>sd 1 0

- st net

"st net" command displays present network states of all sessions.

```
lsh>st net
proto name      local address      peer address      sendq  state
-----
TCP      tty           10.1.0.1( 23)     10.6.0.50(60987)  140  ESTABLISHED
TCP      com1          10.1.0.1( 1470)   10.6.0.50(61012)   0  ESTABLISHED
lsh>
```

Fig 6-4 "st net command"

- st sio

"st sio" command displays the number of bytes for the serial port.

```
lsh>st sio
port fmax rbmax rxbuf txbuf  rx_count  tx_count
-----
com1  8    8    0    0      32        8
lsh>
```

Fig 6-5 "st sio" command

- st uptime

"st uptime" command shows amount of time since H25 boots up.

```
lsh>st uptime
00:08:16.91 up 0 days
lsh>
```

Fig 6-6 "st uptime" command

- sc

"sc" command is used when users close a session. [OP1] means the name of session, and [OP2] should be "close".

```
lsh>sc com1 close
com1: closed
lsh>
```

Fig 6-7 "SC" command

☞ ***In case of the "sc" command you should use only small letters.***

- sd

"sd" command is for capturing serial data. [OP1] means name of the session, [OP2] means period, which has a 10ms unit, for the capture.

```
lsh>sd 1 100
com1 dump start
com1 dump buffering time : 1000ms
lsh>tx1 => 30 31 32 33 34 35 36 37          | 01234567
rx1 <= 30 31 32 33 34 35 36 37          | 01234567
tx1 => 30 31 32 33 34 35 36 37          | 01234567
```

Fig 6-8 "sd" command

To stop the capturing, just input 0 to [OP2].

```
lsh>sd 1 0
com 1 dump stop
lsh>
```

Fig 6-9 stop capturing

6.2.2 Using ezManager

Status of CSE-H25 can be monitored by [Status] button on ezManager. By using the [Refresh Every 1 Second] option in the status window, the status is automatically updated in every second.

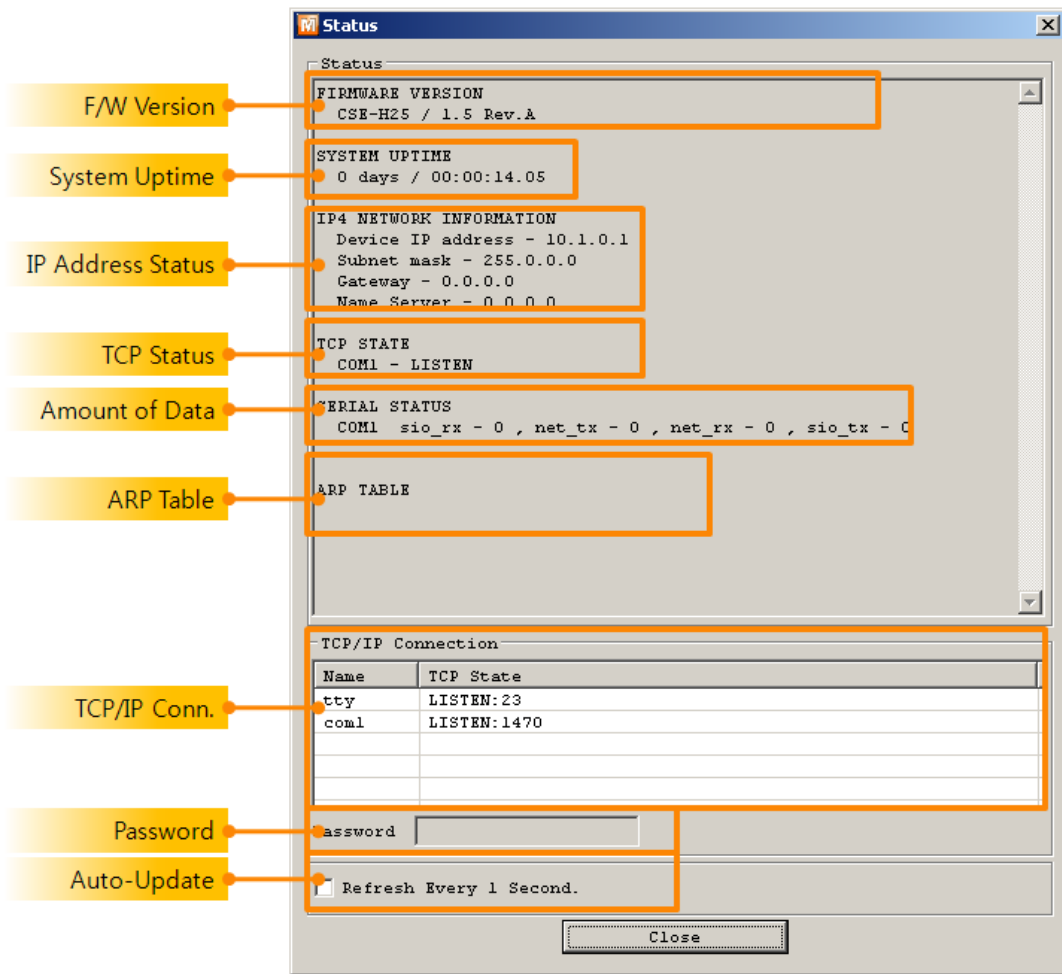


Fig 6-10 status window of ezManager

- **FIRMWARE VERSION**
The name of model name and the version of firmware are displayed here.
- **SYSTEM UPTIME**
Amount of time is displayed since CSE-H25 boots up.
- **IP4 NETWORK INFORMATION**
All information about related items with IP Address is shown here. It works even if the IP address is assigned from DHCP or PPPoE.

- TCP STATE

TCP status of each port is shown this section.

Message	Description
LISTEN	listening TCP connection
CLOSE	TCP connection is closed
SYN_SENT	Send "SYN" segment to make TCP connection
ESTABLISHED	When TCP connection is established
N/A	In UDP mode

Table 6-2 TCP STATE

- SERIAL STATUS

Amount of data in every buffer is displayed. The unit is byte.

Buffer	Description
sio_rx	The number of data which is received from the COM port
net_tx	The number of data which is sent to the remote host
net_rx	The number of data which is received from the remote host
sio_tx	The number of data which is sent to the COM port

Table 6-3 SERIAL STATUS

- ARP TABLE

This part shows ARP table on CSE-H25. When TCP connection is established or UDP data communication is performed, the information of IP and MAC address is automatically stored in the ARP table. This information is held for 1 minute. When 50 seconds is passed, CSE-H25 starts broadcasting the ARP packet again. If there is no response until the time is 0, the information is removed. If there is response, the time is updated 60 seconds again.

- TCP/IP Connection

In this section, the same information with TCP STATE is displayed with IP address and port number. A difference is that users can terminate TCP connection. When right click on a session, a small pop-up window is created.

- Password

This text box is activated when CSE-H25 has a password. If users want to close TCP connection with right click of mouse on the session, this password has to be correctly filled.

- Refresh Every 1 Second.

If this option is checked, ezManager send query in every second.

6.2.3 Debugging Message

By using [Debugging] option, users can receive debugging messages from CSE-H25 on the network.

- Setting debugging option

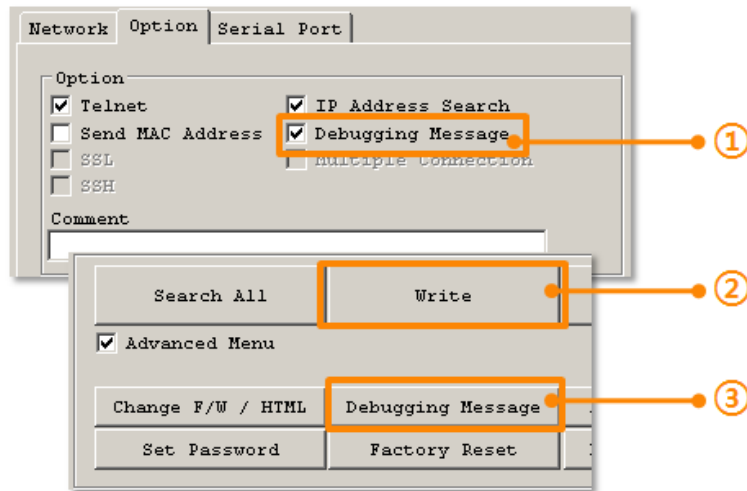


Fig 6-11 setting debugging option

- ① Check the [Debugging Message] option
- ② Press the [Write] button
- ③ After check the [Advanced Menu], click the [Debugging Message] button. And then, the debugging message window is shown on your screen like figure 6-10.

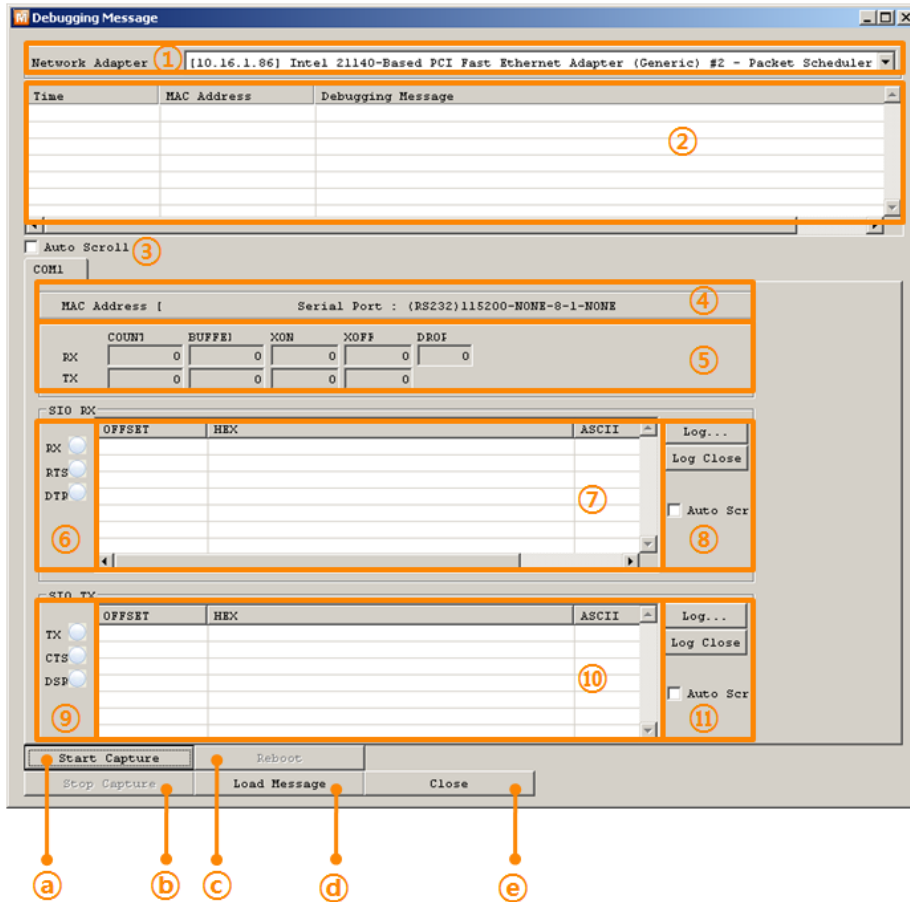


Fig 6-12 debugging message window

- ① Pull down menu for selecting a network adapter
- ② Place for showing received debugging messages from CSE-H25 over the network
- ③ Auto update to display the latest captured file on the screen of ②
- ④ MAC Address Information of a selected message
- ⑤ ~ ⑪ Unavailable
- a) To start capturing debugging messages from CSE-H25
- b) To stop capturing debugging messages from CSE-H25
- c) Unavailable
- d) [Load Message] is for loading a debugging log file to display
- e) Closing debugging message window

☞ *If you have problems with communication or connection, it can be helpful for us that you capture the debugging messages and send us to the file.*

☞ *When you use [Debugging Message] function, it can cause network traffic because the messages are broadcasted to whole network. If you don't use it anymore, you should uncheck the function.*

7 Additional Functions

7.1 Access Restriction

7.1.1 Restriction of Access (ezTCP Firewall)

On the [Option] tab of ezManager, users can set restriction of access function with filtering MAC and IP address.

- Allowed MAC Address

If this option has a value of MAC address, the device which has the MAC address is only permitted to access.

- Allowed IP Address

This is for qualifying hosts with IP address or range of IP address. The range is defined by multiplying [IP address] and [Network Mask] in bit unit.

- Examples

IP Address	Network Mask	Allowed IP Address Range
10.1.0.1	255.0.0.0	10.1.0.1 ~ 10.255.255.254
10.1.0.1	255.255.255.0	10.1.0.1 ~ 10.1.0.254
192.168.1.4	255.255.255.255	192.168.1.4

Table 7-1 examples of defining allowed IP range

- Apply to ezManager

[Apply to ezManager] is for applying above two restrictions to ezManager functions like [Search], [Read], [Write] and etc.

7.1.2 Setting Password

A password can be used for protecting CSE-H25 from TELNET login or changing environmental parameters by hosts which are not qualified. The maximum length is 8 bytes of Alphabet or number.

☞ ***When you want to revoke all of these restrictions, operate CSE-H25 as ISP mode. In the mode, all restrictions are removable and communication with ezManager is revoked.***

7.2 Notify IP Change

CSE-H25 can be TCP server even though it assigned IP address automatically. Using [Notify IP Change] function, H25 sends its IP address with the host name to the designed server. There are 3 types- DDNS, TCP and UDP- for this service.

- Dynamic Domain Name Service (DDNS)

CSE-H25 supports DDNS service offered by DynDNS to manage its changed IP address as a host name. Because of this, you have to make an account and create host names on the website of DynDNS before use this.

☞ *All about service usage of an account could be changed according to the policy of DynDNS.*

☞ *Homepage of DynDNS: <https://dyn.com/>*

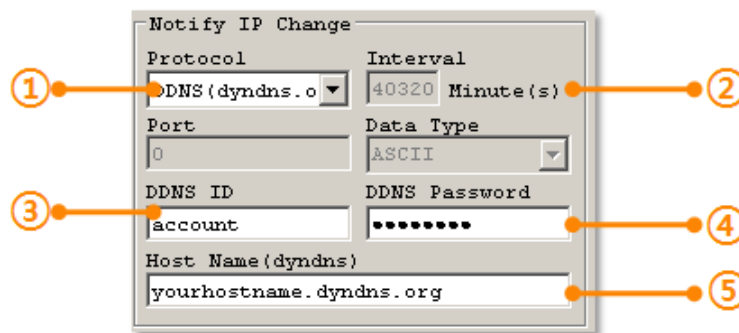


Fig 7-1 setting DDNS

- ① Select the [DDNS(dyndns.org)]
- ② 40,320 is a fixed value
- ③ Input the ID of DDNS account
- ④ Input the password of the account
- ⑤ Input a host name which you create on your account

- TCP/UDP

In case you have an own server and want to manage the information about changed IP addresses, you allowed used TCP/UDP for using this option. The [Data Type] can be selected as ASCII or hexadecimal, and the [Interval] is available on configuration.

☞ *For more information about this, please refer to the "Notify IP Change" document on the [DOWNLOAD] >> [Download] board of our web site.*

7.3 Sending MAC Address

[Sending MAC Address] is a function that CSE-H25 sends its MAC address to the remote host right after the connection is established. By using this function, a server can identify multiple devices with the information.

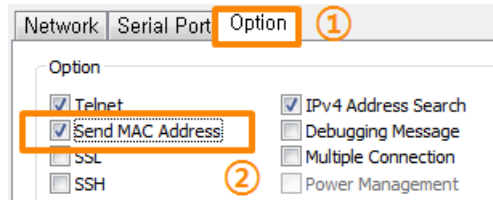


Fig 7-2 setting of Sending MAC Address function

- ① Move to the [Option] tab.
- ② Check the [Send MAC Address] option.

7.4 TELNET COM port Control Option (RFC 2217)

This option is for sending and receiving serial port states between two devices. Users can send and receive control signals like RTS/CTS when the states are changed.

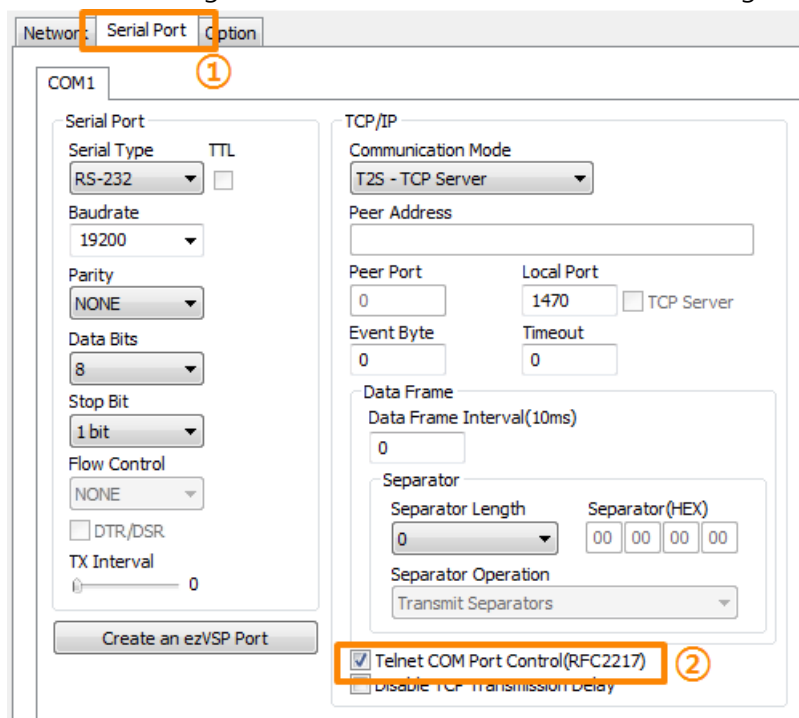


Fig 7-3 setting of TELNET COM Port Control option

- ① Move to the [Serial Port] tab.
- ② Check the [Telnet COM Port Control (RFC2217)] option.

☞ If you want details about the [TELNET COM port Control Option] and [Sending MAC Address], please refer to the documents on the [DOWNLOAD] >> [Download] board of our website.

7.5 Separator

Using this function, you can control the length of network packets by specific characters.

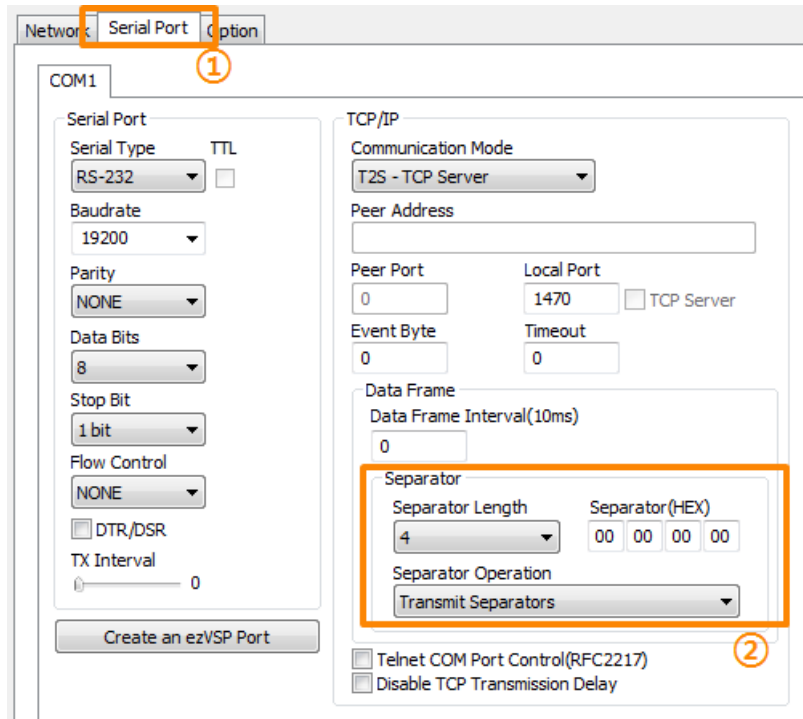


Figure 7-4 setting of separator

- ① Move to the [Serial Port] tab.
- ② Set the separator.

separator	options
Length	select the length between 0 ~ 4 bytes
Operation	Transmit Separators without additional bytes
	Transmit Separators + 1 byte
	Transmit Separators + 2 bytes

Table 7-2 separator

7.6 SSL (Secure Socket Layer)

Secure Socket Layer (SSL) is a security protocol over the Internet and widely used in many communication systems.

7.6.1 How to use as a TCP client

Just check the option on ezManager.

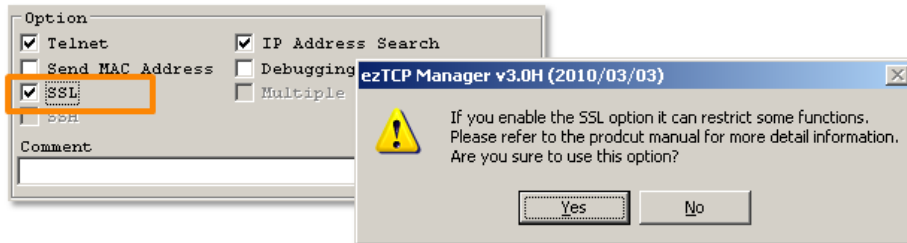


Fig 7-5 activation of the SSL option

☞ ***[Multiple Connection], [SSH] and [TELNET COM Port Control] options are unavailable while using [SSL] option.***

7.6.2 How to use as a TCP server

To use SSL option as a TCP server, you should create a certification.

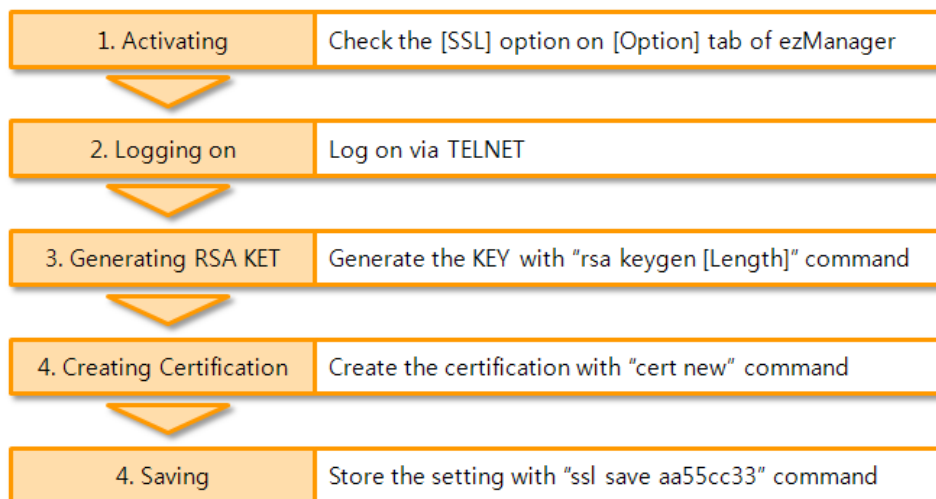


Fig 7-6 processes for SSH

☞ ***For the details about the SSL setting, please refer to the "SSL Function Manual" document on the [DOWNLOAD] >> [Download] board of our web site.***

7.7 SSH (Secure Shell)

Secure Shell (SSH) is a kind of logging on system of Linux and Unix, which is intensified for the security.

7.7.1 How to use

Follow the below procedures

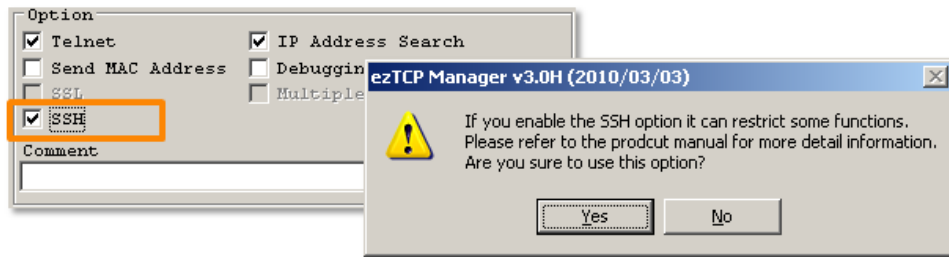


Fig 7-7 activation of the SSL option

- ☞ ***[Multiple Connection], [SSH] and [TELNET COM Port Control] options are unavailable and only TCP server can be used while using [SSL] option.***

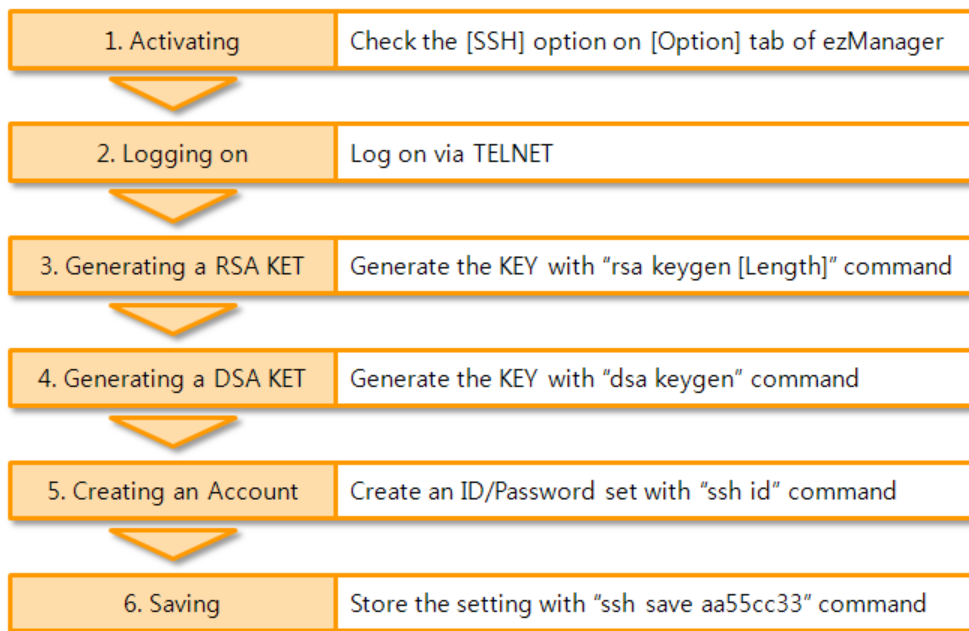


Fig 7-8 processes for SSH

- ☞ ***For the details about the SSH setting, please refer to the "SSH Function Manual" document on the [DOWNLOAD] >> [Download] board of our web site.***

7.8 Multiple Connection

[Multiple Connection] is for receiving and monitoring a device to multiple hosts in the same time. The maximum session number is 8 for the [Multiple Connection].

7.8.1 How to use

The option is available after activating the [Multiple Connection] on ezManager.

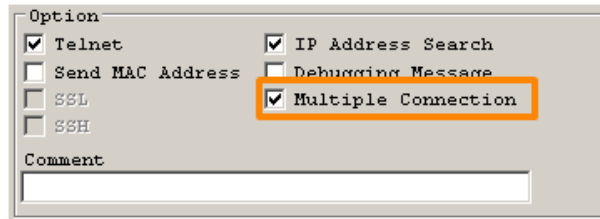


Fig 7-9 activation of the [Multiple Connection]

7.8.2 Diagram

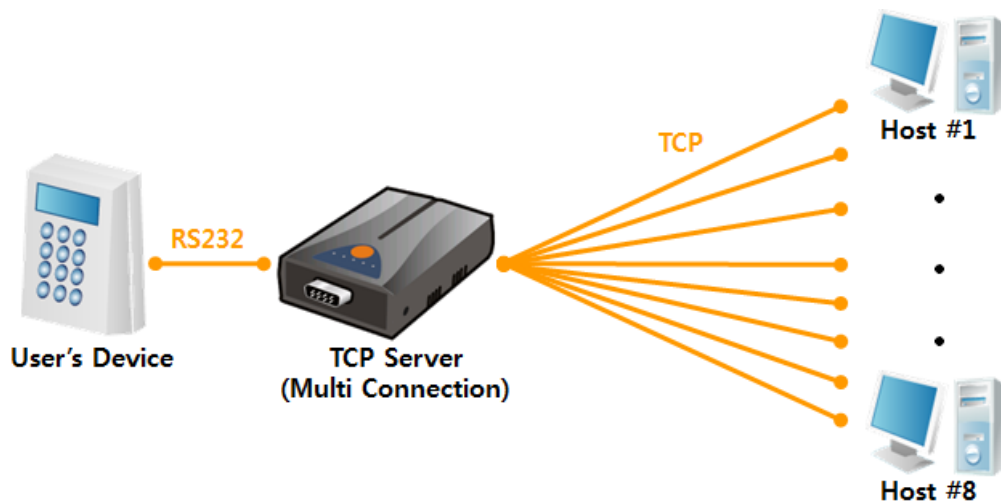


Fig 7-10 diagram for the [Multiple Connection]

- Data from each host is sent to the User's device via CSE-H25
- Data from the User's device is sent to the all hosts (#1 ~ 8) via CSE-H25

8 Self-Test in Trouble

When users are in trouble with CSE-H25, make sure all the followed steps first.

8.1 Searching problem with ezManager

- Confirming types of configuration utility
CSE-H25 can be configured by ezManager.
- Stopping Firewall operation
Firewalls of personal computer or network block broadcast packets. Stop all the firewalls before searching CSE-H25

☞ ***Most of vaccine programs have firewall functions so it can cause some trouble to search CSE-H25. Stop these programs before the searching.***

- Stable supply of the power
Check if the power is supplied continually. If the power is constantly supplied, the PWR LED (Red) on the CSE-H25's body will be turned ON.
- Connection with the network
Make sure that the network connection is fine including Ethernet cable. In this step, we recommend that users connect CSE-H25 with PC directly or in the same network hub.
- Checking options of restriction
In case that restriction of access is activated, the communication with ezManager can be impossible. When users are in this situation, make CSE-H25 operate in ISP mode.

8.2 Connection Problem over TCP/IP

- Checking parameters related with TCP/IP

When CSE-H25 has a private network IP address, personal computer's IP address has to be the same sub network. Check if the IP address and local port number are correct. In case of a fixed IP address, the subnet mask, gateway IP address and DNS IP address should be configured.

TCP Server side	TCP Client side
Local IP Address, Local Port, Subnet Mask, Gateway IP Address, DNS IP Address, DDNS option	Local IP Address, Peer Address, Peer Port, Subnet Mask, Gateway IP Address, DNS IP Address,

Table 8-1 major parameters related with TCP/IP

- PING Test

Confirm the connection over the network by PING test. If the CSE-H25 doesn't send any reply from the request, check the network environment.

- Firewall

In case the networks which need strong security, the access may be denied by their firewall. Under this circumstance, users should ask the person in charge of their network to release ports which will be used. (Ex: TCP 1470, UDP 50005)

- Operation Mode

TCP connection is not possible when CSE-H25 is operating in the ISP or Serial Configuration mode.

- Communication Mode

To make TCP connection, both a server and client should exist. If there are only servers or clients, TCP connection can't be established.

- ezTCP Firewall

When users set the ezTCP firewall with MAC and IP address, any hosts can't be reachable to it except for the hosts which have the allowed MAC and IP address. Inactivate the option or check the setting is correct.

- Checking the TCP status

TCP is a protocol connected one to one without multiple connection function. Because of this, if a device is on TCP connection, other requests are denied. If users are in this situation, check the network status by connecting on TELNET or using ezManager.

8.3 Data Communication Problem on the Serial

- Connection of Pins

Check if the connection of each pin is right. Using cables, users choose the right type of cable which is suitable for the device. Transmit Data (TXD) pin should be connected with Receive Data (RXD) pin. Look at the figure 8-1.

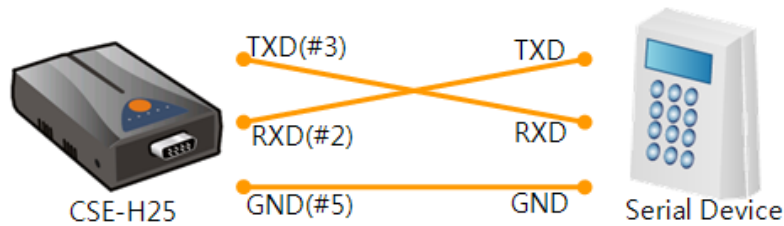


Fig 8-1 RS232 connection

- Setting parameters

Check if all the serial port parameters like Baud Rate, Data bit, Stop bit and Parity are properly set.

☞ **Contact us if you have any questions about above steps or our products.**

9 Technical Support and Warranty

9.1 Technical Support

If you have any question regarding operation of the product, visit Customer Support FAQ corner and the message board on Sollae Systems' web site or send us an email at the following address:

- E-mail: support@eztcp.com
- Website Address for Customer Support: <https://www.eztcp.com/en/support/>

9.2 Warranty

9.2.1 Refund

Upon the customer's request to refund the product within two weeks after purchase, Sollae Systems will refund the product.

9.2.2 Free Repair Services

For product failures occurring within 2 years after purchase, Sollae Systems provides free repair services or exchange the product. However, if the product failure is due to user's fault, repair service fees will be charged or the product will be replaced at user's expense.

9.2.3 Charged Repair Services

For product failures occurring after the warranty period (2 years) or resulting from user's fault, repair service fees will be charged and the product will be replaced at user's expense.

10 Precaution and Exemption from Liability

10.1 Precaution

- Sollae Systems is not responsible for product failures occurring due to user's alteration of the product.
- Specifications of the product are subject to change without prior notice for performance improvement.
- Sollae Systems does not guarantee successful operation of the product if the product was used under conditions deviating from the product specifications.
- Reverse engineering of firmware and applications provided by Sollae Systems is prohibited.
- Use of firmware and applications provided by Sollae Systems for purposes other than those for which they were designed is prohibited.
- Do not use the product in an extremely cold or hot place or in a place where vibration is severe.
- Do not use the product in an environment in which humidity is high or a lot of oil exists.
- Do not use the product where there is caustic or combustible gas.
- Sollae Systems does not guarantee normal operation of the product under the conditions a lot of noise exists.
- Do not use the product for a purpose that requires exceptional quality and reliability relating to user's injuries or accidents – aerospace, aviation, health care, nuclear power, transportation, and safety purposes.
- Sollae Systems is not responsible for any accident or damage occurring while using the product.

10.2 Exemption from Liability

10.2.1 English version

In no event shall Sollae Systems Co., Ltd. And its distributors be liable for any damages whatsoever (including, without limitation, damages for loss of profit, operating cost for commercial interruption, loss of information, or any other financial loss) from the use or inability to use the CSE-H20 even if Sollae Systems Co., Ltd. Or its distributors have been informed of such damages.

The CSE-H20 is not designed and not authorized for use in military applications, in nuclear applications, in airport applications or for use in applications involving explosives, or in medical applications, or for use in security alarm, or for use in a fire alarm, or in applications involving elevators, or in embedded applications in vehicles such as but not limited to cars, planes, trucks, boats, aircraft, helicopters, etc..

In the same way, the CSE-H20 is not designed, or intended, or authorized to test, develop, or be built into applications where failure could create a dangerous situation that may result in financial losses, damage to property, personal injury, or the death of people or animals. If you use the CSE-H20 voluntarily or involuntarily for such unauthorized applications, you agree to subtract Sollae Systems Co., Ltd. And its distributors from all liability for any claim for compensation.

Sollae Systems Co., Ltd. And its distributors entire liability and your exclusive remedy shall be Sollae Systems Co., Ltd. And its distributors option for the return of the price paid for, or repair, or replacement of the CSE-H20.

Sollae Systems Co., Ltd. And its distributors disclaim all other warranties, either expressed or implied, including, but not limited to, the implied warranties of merchantability and fitness for a particular purpose, with respect to the CSE-H20 including accompanying written material, hardware and firmware.

10.2.2 French version

- Documentation

La documentation du boîtier CSE-H20 est conçue avec la plus grande attention. Tous les efforts ont été mis en œuvre pour éviter les anomalies. Toutefois, nous ne pouvons garantir que cette documentation soit à 100% exempt de toute erreur. Les informations présentes

dans cette documentation sont données à titre indicatif. Les caractéristiques techniques peuvent changer à tout moment sans aucun préavis dans le but d'améliorer la qualité et les possibilités des produits.

- Copyright et appellations commerciales

Toutes les marques, les procédés, les références et les appellations commerciales des produits cités dans la documentation appartiennent à leur propriétaire et Fabricant respectif.

- Conditions d'utilisations et limite de responsabilité

En aucun cas Sollae Systems Co., Ltd. ou un de ses distributeurs ne pourra être tenu responsable de dommages quels qu'ils soient (intégrant, mais sans limitation, les dommages pour perte de bénéfice commercial, interruption d'exploitation commerciale, perte d'informations et de données à caractère commercial ou de toute autre perte financière) provenant de l'utilisation ou de l'incapacité à pouvoir utiliser le boîtier CSE-H20, même si Sollae Systems Co., Ltd. ou un de ses distributeurs a été informé de la possibilité de tels dommages.

Le boîtier CSE-H20 est exclusivement prévu pour un usage en intérieur, dans un environnement sec, tempéré (+10 °C à +40°C) et non poussiéreux. Le boîtier CSE-H20 n'est pas prévu, ni autorisé pour être utilisé en extérieur, ni de façon embarquée dans des engins mobiles de quelque nature que ce soit (voiture, camion, train, avion, etc...), ni en milieu explosif, ni dans des enceintes nucléaires, ni dans des ascenseurs, ni dans des aéroports, ni dans des enceintes hospitaliers, ni pour des applications à caractère médical, ni dans des dispositifs de détection et d'alerte anti-intrusion, ni dans des dispositifs de détection et d'alerte anti-incendie, ni dans des dispositifs d'alarme GTC, ni pour des applications militaires.

De même, le boîtier CSE-H20 n'est pas conçu, ni destiné, ni autorisé pour expérimenter, développer ou être intégré au sein d'applications dans lesquelles une défaillance de celui-ci pourrait créer une situation dangereuse pouvant entraîner des pertes financières, des dégâts matériel, des blessures corporelles ou la mort de personnes ou d'animaux. Si vous utilisez le boîtier CSE-H20 volontairement ou involontairement pour de telles applications non autorisées, vous vous engagez à soustraire Sollae Systems Co., Ltd. et ses distributeurs de toute responsabilité et de toute demande de dédommagement.

En cas de litige, l'entière responsabilité de Sollae Systems Co., Ltd. et de ses distributeurs vis-à-vis de votre recours durant la période de garantie se limitera exclusivement selon le

choix de Sollae Systems Co., Ltd. et de ses distributeurs au remboursement de votre produit ou de sa réparation ou de son échange. Sollae Systems Co., Ltd. et ses distributeurs démentent toutes autres garanties, exprimées ou implicites.

Tous les boîtiers CSE-H20 sont testés avant expédition. Toute utilisation en dehors des spécifications et limites indiquées dans cette documentation ainsi que les court-circuit, les chocs, les utilisations non autorisées, pourront affecter la fiabilité, créer des dysfonctionnements et/ou la destruction du boîtier CSE-H20 sans que la responsabilité de Sollae Systems Co., Ltd. et de ses distributeurs ne puissent être mise en cause, ni que le boîtier CSE-H20 puisse être échangé au titre de la garantie.

- Rappel sur l'évacuation des équipements électroniques usagés

Le symbole de la poubelle barré présent sur le boîtier CSE-H20 indique que vous ne pouvez pas vous débarrasser de ce dernier de la même façon que vos déchets courants. Au contraire, vous êtes responsable de l'évacuation du boîtier CSE-H20 lorsqu'il arrive en fin de vie (ou qu'il est hors d'usage) et à cet effet, vous êtes tenu de le remettre à un point de collecte agréé pour le recyclage des équipements électriques et électroniques usagés. Le tri, l'évacuation et le recyclage séparés de vos équipements usagés permettent de préserver les ressources naturelles et de s'assurer que ces équipements sont recyclés dans le respect de la santé humaine et de l'environnement. Pour plus d'informations sur les lieux de collecte des équipements électroniques usagés, contacter votre mairie ou votre service local de traitement des déchets.

11 History

Date	Version	Comments	Author
2009.07.30	1.0	○ Created	-
2009.09.02	1.1	○ Modified figure 4-2	-
2009.09.03	1.2	○ Modified Components list	-
2010.03.22	1.3	○ Document structure has been updated	Roy LEE
2010.04.12	1.4	○ Some wrong expressions have been corrected.	Roy LEE
2012.01.17	1.5	○ Caution about service using of DynDNS has been added ○ Modified dimension	Peter LEE
2012.02.08	1.6	○ Add recommended values of the Event Byte	Peter LEE
2012.06.18	1.7	○ Extend the warranty period to two years ○ Change description of network interface ○ Remove description about Memory, PPPoE and DHCP	Peter LEE
2013.02.19	1.8	○ Add separator function ○ Change multiple Connection(3ch->8ch)	Peter LEE
2013.05.14	1.9	○ Add related material ○ Add exemption from liability	Peter LEE
2016.03.22	2.1	○ Add explanation for telnet login.	Peter LEE
2017.08.23.	2.2	○ Improve explanation about the table 1-4 ○ Move the position of caption for all tables ○ Add description about the sd command for TELNET ○ Correct some errors and expressions	Roy LEE
2022.07.28.	2.3	○ Add a notification about FCC	Roy Lee
2022.08.26.	2.4	○ Updated URLs of websites ○ Removed the Components section ○ Removed the Related materials section	Roy Lee