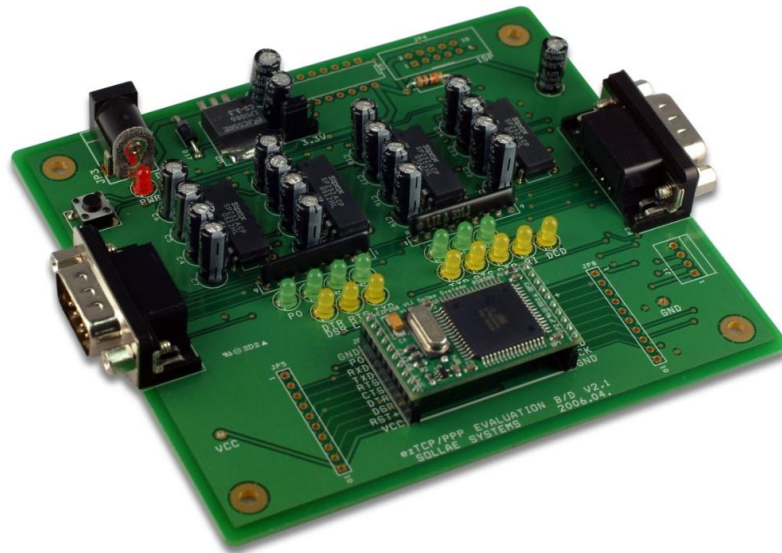


ezTCP Technical Documents

# EZP-250 EVB Manual

Version 1.0

2010-01-05



Sollae Systems Co., Ltd.

<http://www.sollae.co.kr>

# Contents

<b>1</b>	<b>Specification .....</b>	<b>- 2 -</b>
1.1	Hardware composition.....	- 2 -
1.2	Hardware Specifications.....	- 2 -
1.3	Interfaces .....	- 3 -
1.3.1	<i>Power</i> .....	- 3 -
1.3.2	<i>Voltage Selection Jumper</i> .....	- 3 -
1.3.3	<i>RS232 Port</i> .....	- 3 -
1.3.4	<i>Interface for EZP-250</i> .....	- 4 -
1.3.5	<i>Additional Connectors</i> .....	- 4 -
<b>2</b>	<b>Technical Support / Warranty / Precautions.....</b>	<b>- 5 -</b>
2.1	Technical Support .....	- 5 -
2.2	Warranty .....	- 5 -
2.2.1	<i>Refund</i> .....	- 5 -
2.2.2	<i>Free A/S</i> .....	- 5 -
2.2.3	<i>Charged A/S</i> .....	- 5 -
2.3	Precautions.....	- 6 -
<b>3</b>	<b>Revision History.....</b>	<b>- 7 -</b>

# 1 Specification

## 1.1 Hardware composition

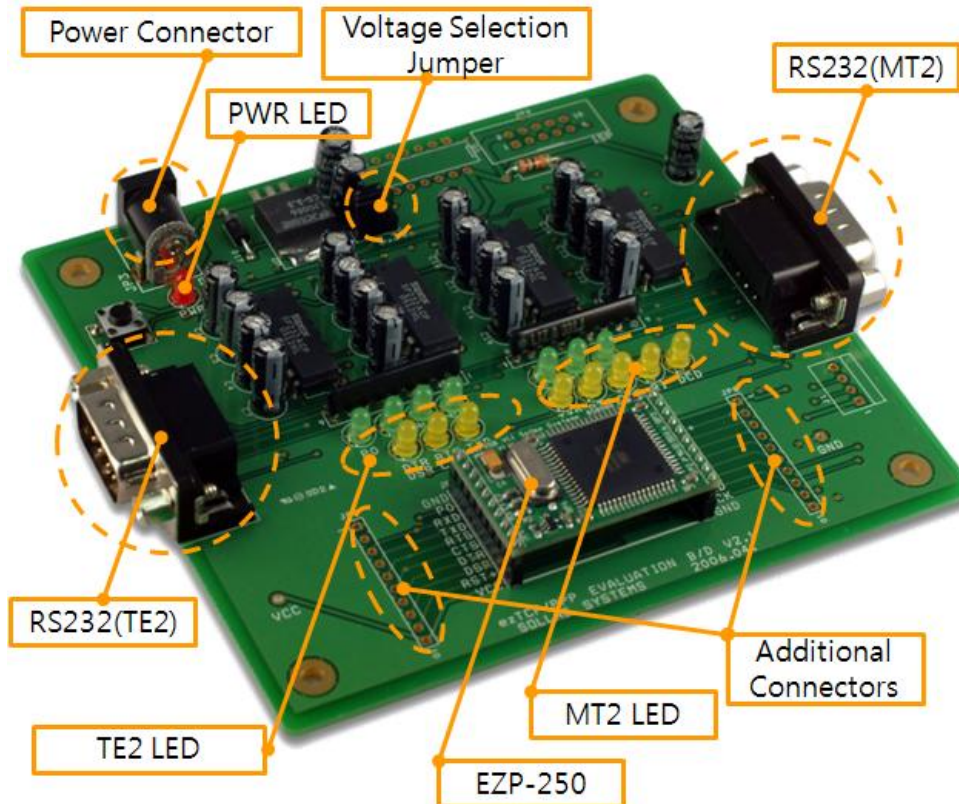


Fig 1-1 composition of EVB

## 1.2 Hardware Specifications

Power	Input	DC 5V
	Internal	DC5V / DC3.3V (Optional by the JP2)
Dimension	114 mm x 102mm	
Available Modules	EJP-250 / EJP-200 / EJP-250LV	
Interfaces	Serial	RS232 x 2 (D-sub 9pin Male) 115200 bps
		TE2: RXD, TXD, RTS, CTS, DTR, DSR MT2: RXD, TXD, RTS, CTS, DTR, DSR, RI, DCD
LED	PWR	Red
	ETC.	TE2: RXD, TXD, RTS, CTS, DTR, DSR MT2: RXD, TXD, RTS, CTS, DTR, DSR, RI, DCD
Temperature	Operating: -20 ~ 70°C	
ETC.	Reset Switch	

## 1.3 Interfaces

### 1.3.1 Power

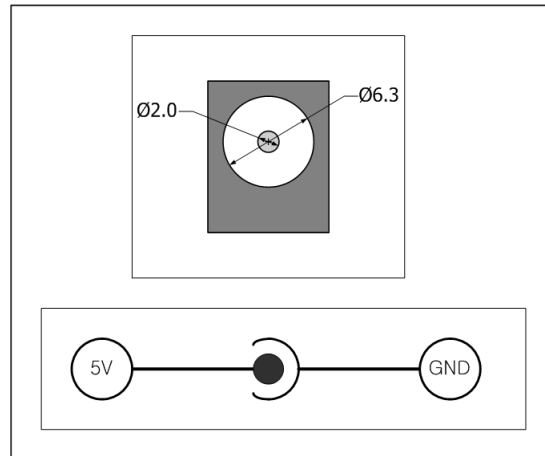


Fig 1-2 Power

### 1.3.2 Voltage Selection Jumper

Table 1-1 voltage selection jumper

Internal voltage	5V		3.3V
Supply 5V to the EZP-250			
Supply 3.3V to the EZP-250			

### 1.3.3 RS232 Port

This is a 9 pin D-sub male connector.

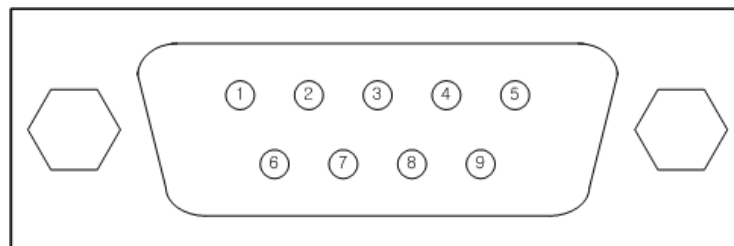


Fig 1-3 9 pin D-sub male connector

- Pin assignment of RS232

Table 1-2 pin assignment of RS232

Number	Name	Description	Level	Direction	Note
1	DCD	Data Carrier Detect	RS232	IN	MT2
2	RXD	Receive Data	RS232	IN	
3	TXD	Transmit Data	RS232	OUT	
4	DTR	Data Terminal Ready	RS232	OUT	
5	GND	Ground	Ground	-	
6	DSR	Data Set Ready	RS232	IN	
7	RTS	Request To Send	RS232	OUT	
8	CTS	Clear To Send	RS232	IN	
9	RI	Ring Indicator	RS232	IN	MT2

### 1.3.4 Interface for EZP-250

- JP6

Connect JP6 to the JP1 of EZP-250.

- JP7

Connect JP7 to the JP2 of EZP-250.

### 1.3.5 Additional Connectors

For users which want to interface with another board using 5 or 3.3V level, EVB of EZL-250 has additional connectors.

- JP5

Except for pin number 2, all pins of this connector are internally connected with JP6 by pin to pin.

- JP8

All pins of this connector are internally connected with JP7 by pin to pin

## 2 Technical Support / Warranty / Precautions

### 2.1 Technical Support

If there are any questions regarding the product, please use FAQ or Q/A board in Sollae Systems' homepage. Also, feel free to contact us by email.

- Customer support homepage address

<http://www.eztcp.com/en/Support/support.php>

- E-mail address

[support@sollae.co.kr](mailto:support@sollae.co.kr)

### 2.2 Warranty

#### 2.2.1 Refund

If user demands refund within 2 weeks of purchase, the product will be refunded.

#### 2.2.2 Free A/S

If product malfunctions within 1 year of purchase, repair and product exchange will be done without charge.

#### 2.2.3 Charged A/S

Products after 1 year of purchase or product malfunctions due to user's miss care will be repaired and exchanged with charge.



## 2.3 Precautions

- If the product is modified, it is no longer guaranteed.
- Specifications of the product may be changed without prior notice for performance improvement.
- If the product is used for functions that are not covered by the product specification, the product is no longer guaranteed as well.
- All kind of Reverse Engineering is prohibited.
- It prohibits the use of firmware and provided applications for other purpose.
- Do not use the product in extreme temperature or vibration conditions.
- Do not use the product in highly humid and oily environment.
- Do not use the product in combustible or corrosive gas environment.
- The product functions are not guaranteed in environments with too much noise.
- Do not use this product for special cases requiring high quality and reliability such as space, airplane, medicine, nuclear power, transportation and other safety devices.
- If accidents or loss may occur using this product, Sollae Systems will not be liable for any compensation.

## 3 Revision History

Date	Version	Comments	Author
2010.01.05	1.0	○ Created	Roy LEE

