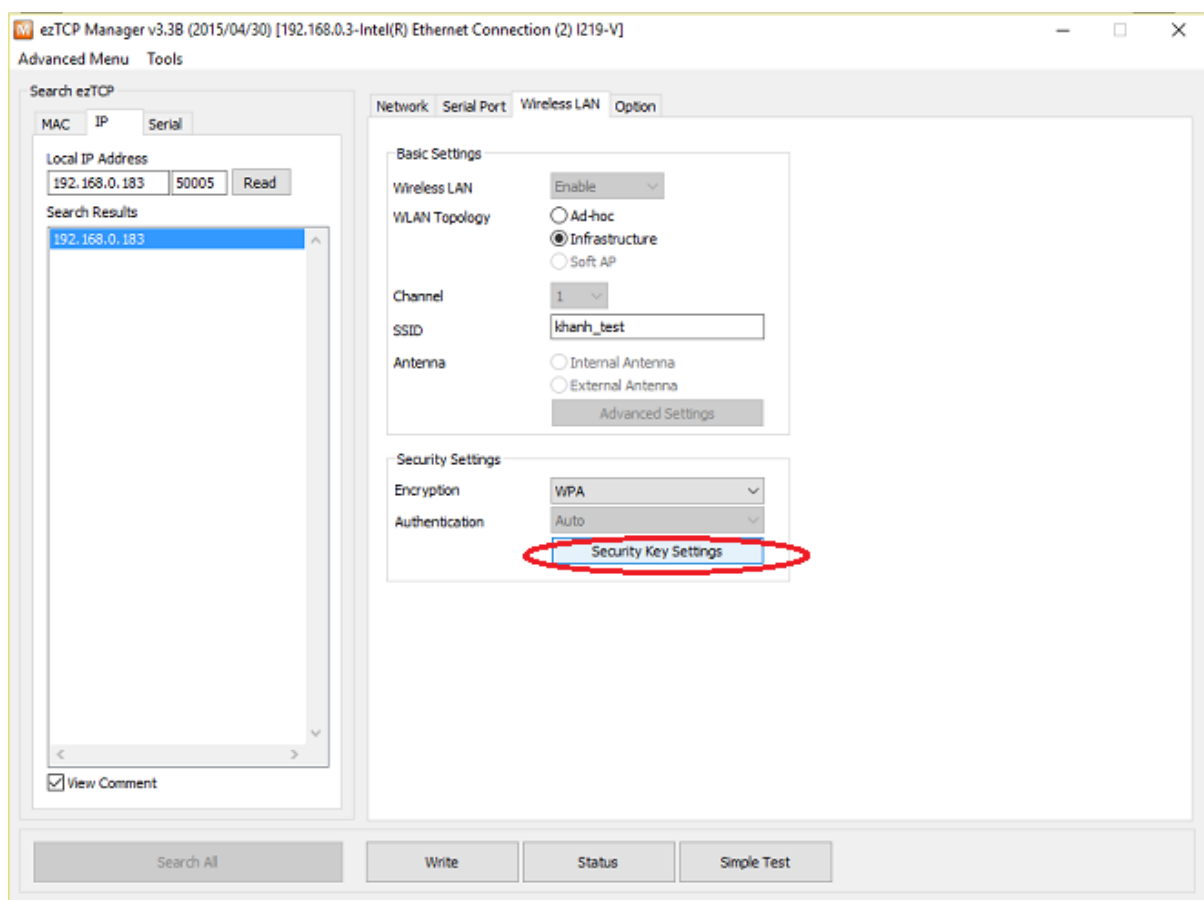
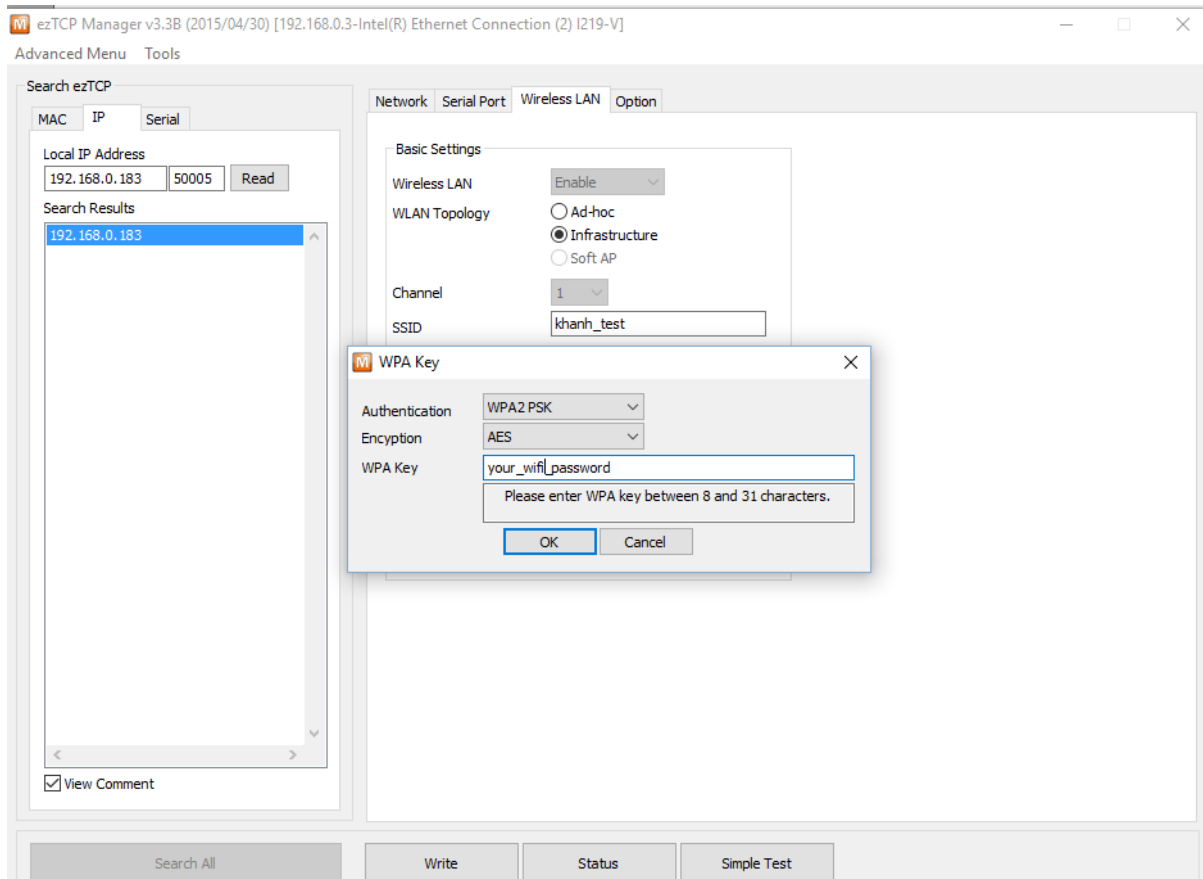


Thank you for using our products.

For network configuration and testing, you can refer to page 13->23 of this document <http://www.eztcp.com/documents/manual/csw80en.pdf> . You need to download ezManager at <http://www.eztcp.com/utilities/ezManager.zip>

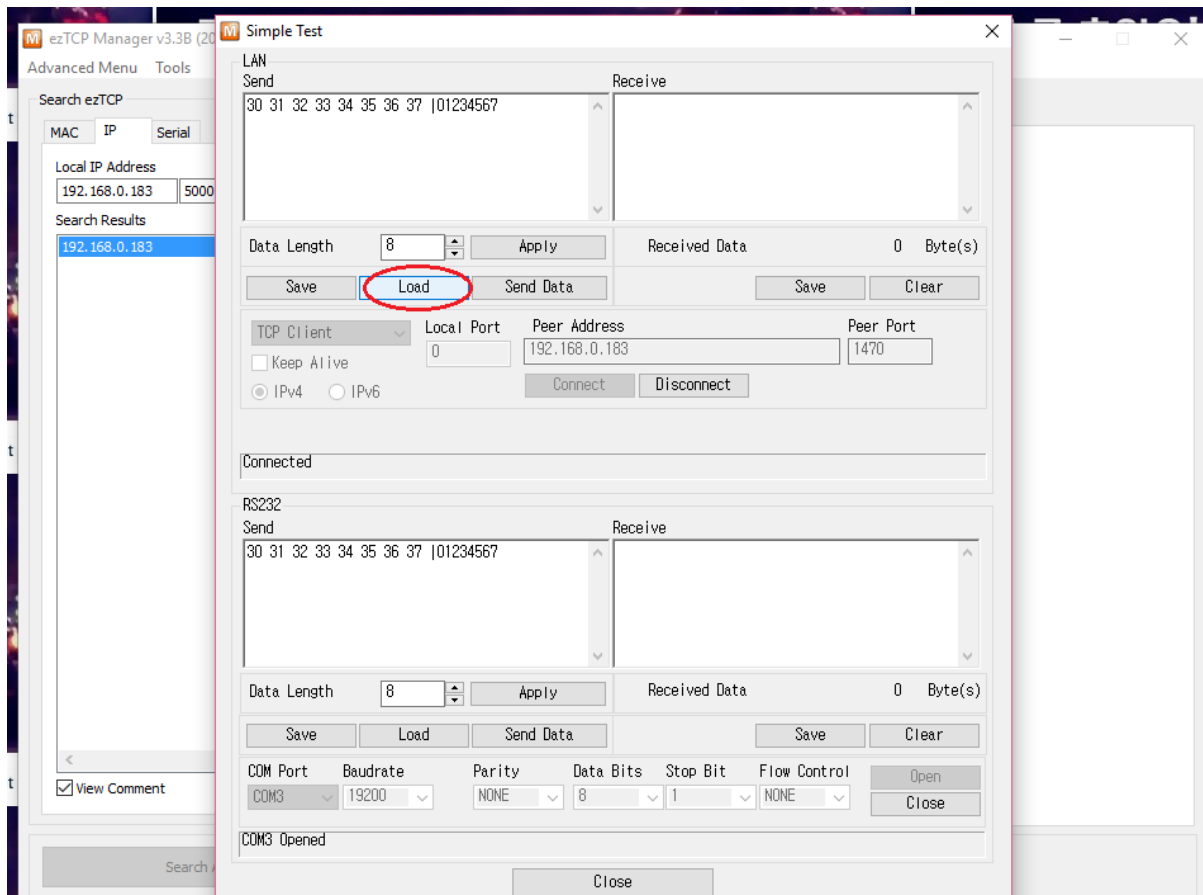
Note that you need to set password of your WLAN as follows:



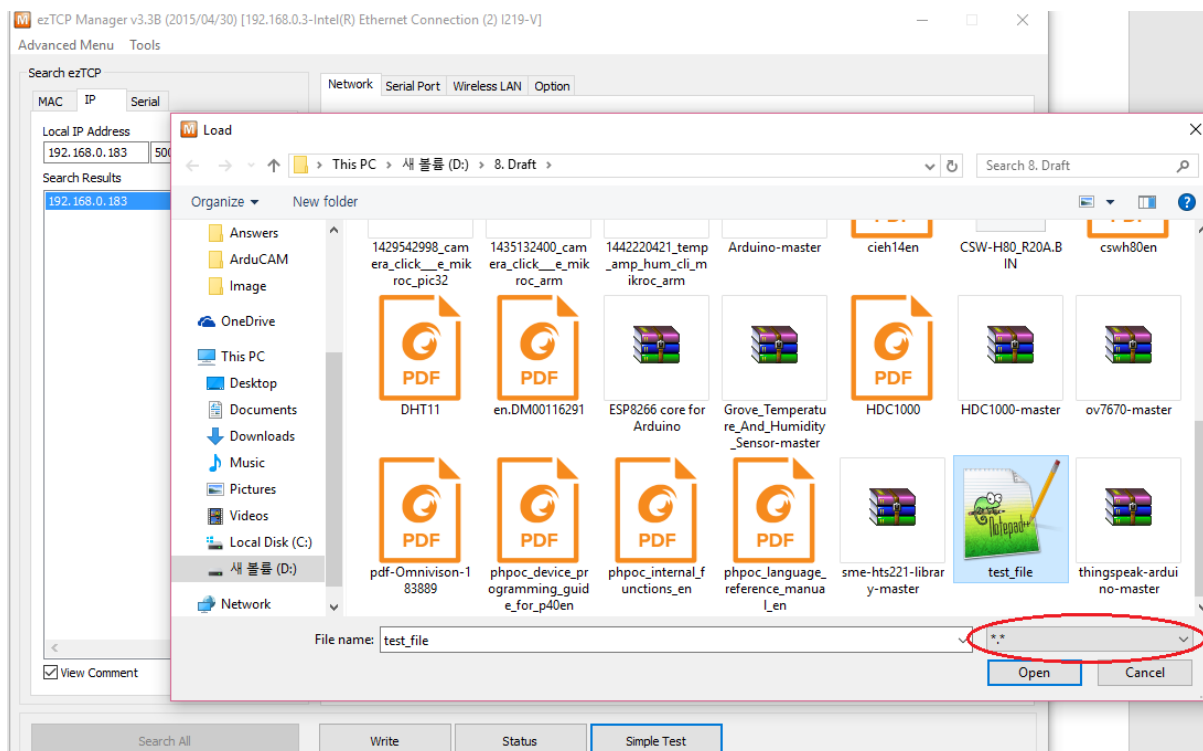


All above parameters are depended on your WLAN configuration.

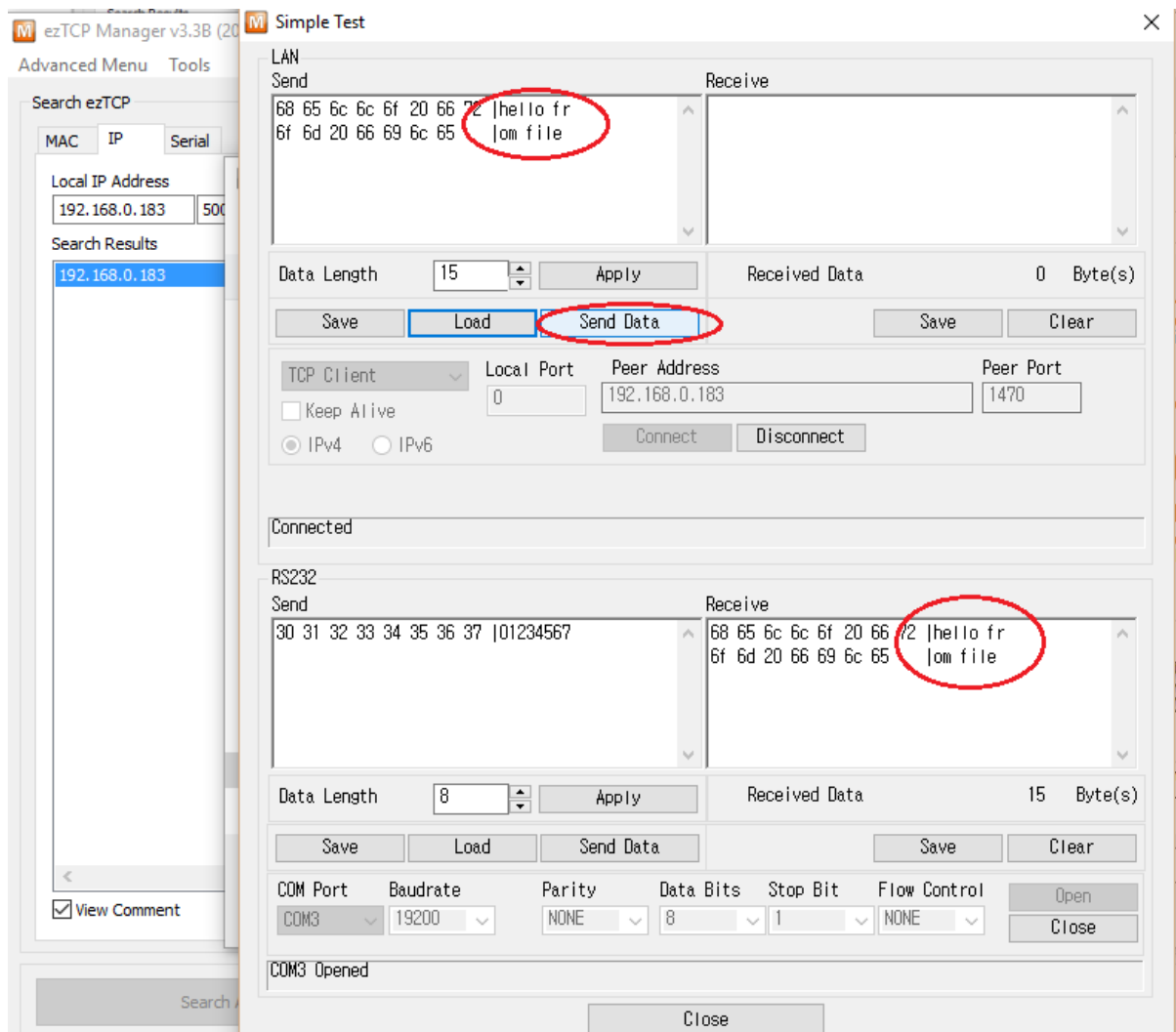
To send some file to your device through CSW-H80, click "simple test" button on ezManager.



Click "Load" Button and select your file



Click "Send Data" Button.



I hope the above is useful to you.

Please feel free to contact me if you need any further information.

Thank you,

Best regards,