

Data Sheet

SCG-5632 | 32-Port RS232 Console Server



Overview

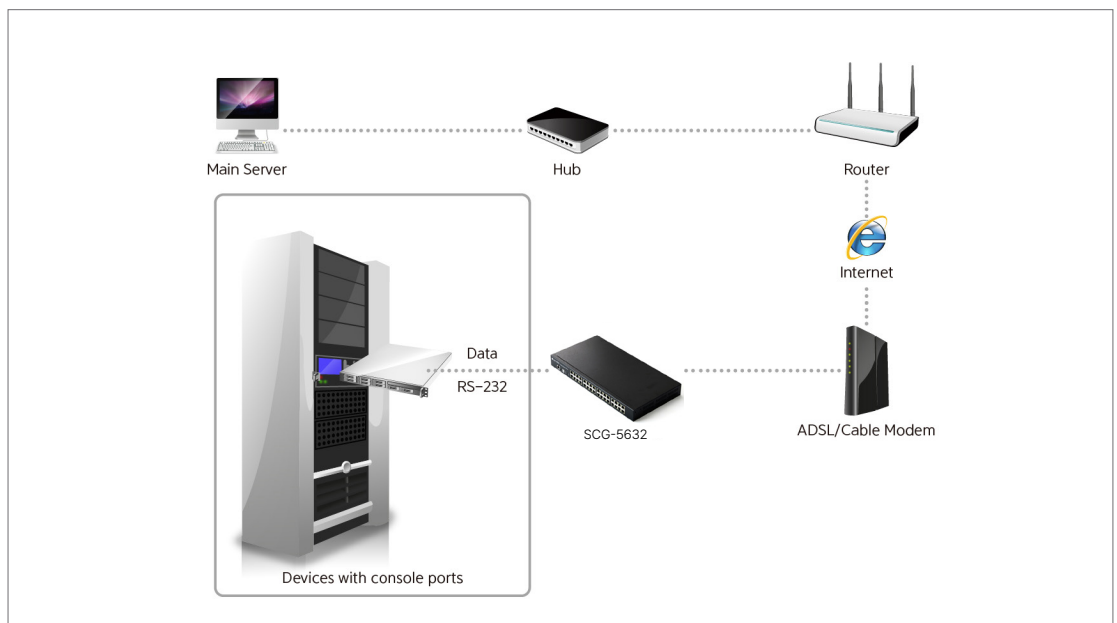
The SCG-5632 is an industrial console server equipped with 32 RS232 ports.

Users can remotely access serial communication devices connected to the RS232 ports of these products.

Features

- Multiple RS232 ports: 32
- Supports console and GUI configuration
- Supports COM port scanning function
- Supports ACL (Access Control List) function
- Supports batch configuration

Application



Specifications

Serial Physical Interface	
Serial Interface	RS232 – RXD, TXD, RTS, CTS, DTR, DSR, GND
Connector	8-pin RJ45
Serial Port Property	
Baudrate	2,400 ~ 115,200 bps
Data Bits	8bits, 7bits with Parity
Parity	None, Even, Odd, Mark, Space
Stop Bit	1, 2
Flow Control	None, RTS/CTS
Network Physical Interface	
Wired LAN	10Base-T/100Base-TX Ethernet (RJ45)
	Ethernet Speed Auto Sense
	1:1 or Cross-over Cable Auto Sense
Software Functions	
Protocols	TCP, IP, TLS, SSH, ICMP, ARP, TELNET, DHCP, mDNS
Security	Password for Configuring
Additional	ACL, COM port scan
Indicators	
LED	PWR, STS, TXD, RXD
Management	
spFinder	Configuration Tool for Windows
Dimension	
Size	437mm x 228mm x 44mm
Weight	about 2.7Kg
Operating Environments	
Input Voltage	AC 90V ~ 264V
Current Consumption	Typically, 22W
Operating Temperature	-20°C ~ +60°C
Storage Temperature	-20°C ~ +60°C
Operating Environments	
KC	Registration (KS C 9832, KS C 9835)
FCC	FCC Part 15 Subpart B, Class A