

Data Sheet

CSE-M32 | Embedded Serial to Ethernet Converter



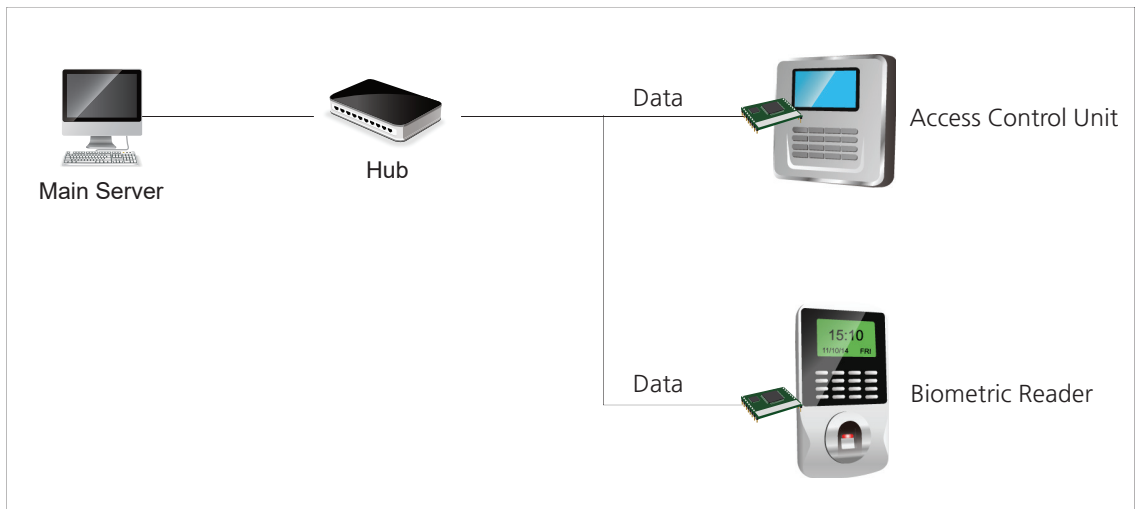
Overview

CSE-M32 is a module for manufacturers who want to quickly and easily embed Ethernet connectivity in their products. This compact module helps your devices get network connectivity with just serial connection. Applying this module, not only you can reduce cost and risk, but also you can shorten development time to add the network capability. Because CSE-M32 allows to extend the distance of your serial communication system, you are able to remotely control and monitor the serial devices over the Internet anywhere you are. Since each of CSE-M32's two UART ports can be designed to interface with RS232, RS422 or RS485 systems, it is available on various environments.

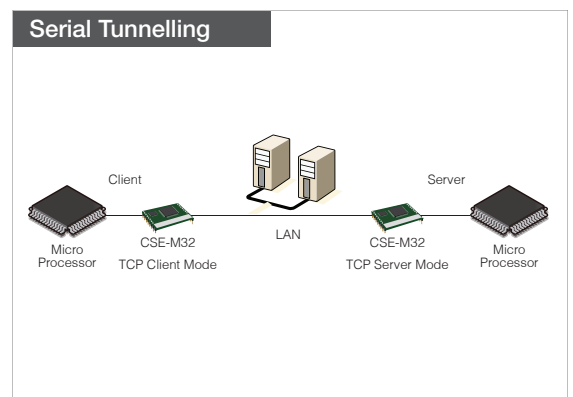
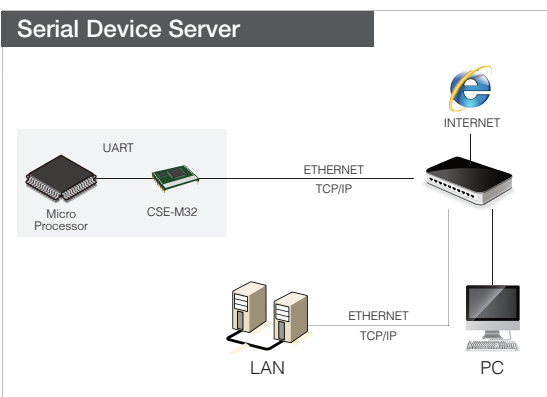
Features

- 2 x UART(3.3V level)
- High speed UART x 1 (up to 921.6Kbps)
- 10/100Mbps Ethernet
- Compact module type (50mm x 32mm x 9mm)
- SSL (Secure Sockets Layer)
- Flexible configuration and network communication by 'AT Commands' (patent)

Applications



System Diagram



Specifications

Serial Physical Interface	
Serial Interface	2 x UART, 3.3V level with 5V tolerant input RXD, TXD, RTS(TXDE for RS485), CTS, GND
Connector	2 X 12 2mm pitch pin header
Serial Port Properties	
Baudrate	300 bps ~ 1,843,200 bps(When only COM1 is used) 300 bps ~ 921,600 bps(When both COM1 and COM2 are used)
Data Bits	5, 6, 7, 8 bits
Parity	None, Even, Odd, Mark, Space
Stop Bit	1, 1.5, 2
Network Physical Interface	
Network Interface	10Base-T/100Base-TX Ethernet Ethernet Speed Auto Sense 1:1 or Cross-over Cable Auto Sense Simple External Circuit Required
Software Functions	
Protocols	TCP, UDP, IP, ICMP, ARP, Ethernet, TELNET TFTP, DHCP, PPPoE, DNS, Telnet COM Port Control Option
Security	SSL (Secure Socket Layer) SSH (Secure Shell) IP & MAC filtering - Restrict host or network Password for Configuring
Communication Mode	TCP Server (T2S) TCP Client (COD) TCP Server/Client with AT command (ATC) UDP Mode (U2S)
Additional Functions	Remote Debug Function Sending MAC address Option
Management	
ezManager	Configuration and Monitoring Tool through Network and Serial
Telnet	Telnet Login
AT Command	Configuring in ATC mode
Supplementary Software	
ezManager	Configuration Tool for Windows
ezVSP	Serial to Network Virtual Driver for Windows
ezTerm	Simple TCP/IP Communication Test Tool
Dimension	
Size	50mm x 32mm x 9mm
Operating Environment	
Input Voltage	DC 3.3V
Current Consumption	230mA typical
Operating Temperature	0°C ~ +55°C
Storage Temperature	-45°C ~ +85°C