

# EZL-300S Application Notes (001)

## Firmware Download

Version 1.0



sollae Systems Co., Ltd.

You can download EZL-300S firmware over wireless LAN. To download the firmware over wireless LAN, log to the EZL-300S console, set EZL-300S to firmware download mode, and download the firmware using the TFTP client.

## 1.1. Download Firmware over wireless LAN

You can download the firmware over wireless LAN using the provided TFTP client hotflash.exe. The download process is described below.

### 1.1.1. Setting IP Address

To download the firmware over wireless LAN, you should set wireless LAN related parameters and IP addresses for your EZL-300S environment.

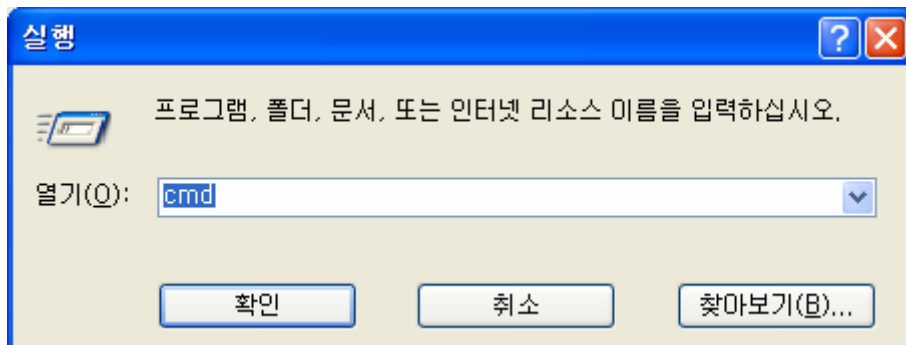
The description in this manual assumes IP addresses for PC and EZL-300S as follows:

	PC	EZL-300S
Local IP Address	10.1.0.2	10.1.0.1
Subnet Mask	255.0.0.0	255.0.0.0
Gateway IP Address	10.1.0.254	10.1.0.254

You can set IP addresses using the provided ezConfig utility.

### 1.1.2. telnet login

Select [Run] in the Windows [Start] menu and type 'cmd' or 'command' to start DOS session.



```
C:\WINDOWS\system32\cmd.exe
Microsoft Windows XP [Version 5.1.2600]
(C) Copyright 1985-2001 Microsoft Corp.

C:\Documents and Settings\mhyun>
```

In the DOS window enter:

'telnet [LOCAL IP ADDRESS]',

where [LOCAL IP ADDRESS] is the IP address of EZL-300S set in the step 1.1.1.

e.g.) telnet 10.1.0.1

The following window will be displayed after login.

```
텔넷 10.1.0.1
MIC v2.2A<arm7-little> Copyright(c) Sollae Systems Co.,Ltd.
msh>
```

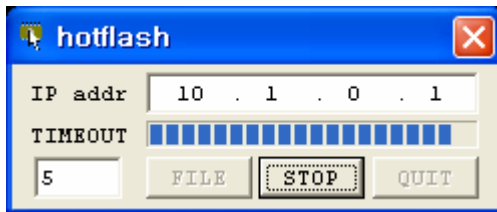
### 1.1.3. Entering firmware download command

After you have logged in telnet, enter the firmware download command 'pf'. You will be prompted whether you want to start firmware downloading. Enter 'y' to start downloading or 'n' to cancel.

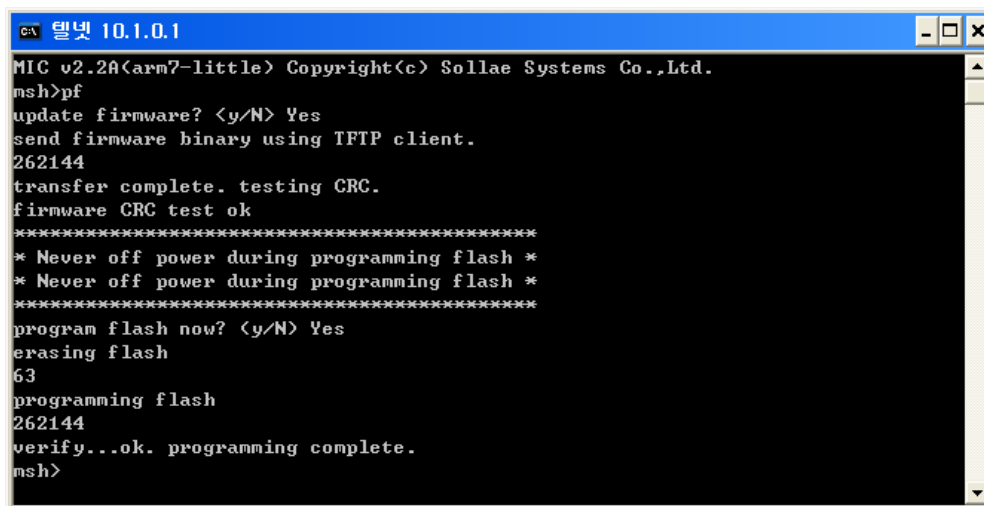
```
텔넷 10.1.0.1
MIC v2.2A<arm7-little> Copyright(c) Sollae Systems Co.,Ltd.
msh>pf
update firmware? <y/N> Yes
send firmware binary using TFTP client.
-
```

#### 1.1.4. Running hotflash and Downloading Firmware

Run hotflash when the message shown in 1.1.3 is displayed. Enter EZL-300S IP address, in the [FILE] menu select which firmware you want to download, and click [SEND] to start.



When hotflash finishes downloading files, you will be prompted whether you want to store files in the flash memory. Press 'y' to store downloaded files in EZL-300S flash memory.



#### 1.1.5. Rebooting

After completing the download process, restart EZL-300S.

☞ To check firmware version, select [Display Current Status] in the ezConfig.