

EZL-200F Application Note (001)

Firmware Download

Version 1.0



1.

EZL - 200F ()
telnet EZL - 200F
console EZL - 200F
TFTP ISP

1.1.

TFTP
hotflash.exe

1.1.1. IP

, EZL - 200F 가
IP IP
[LOCAL IP ADDRESS], [SUBNET MASK], [GATEWAY IP ADDRESS]

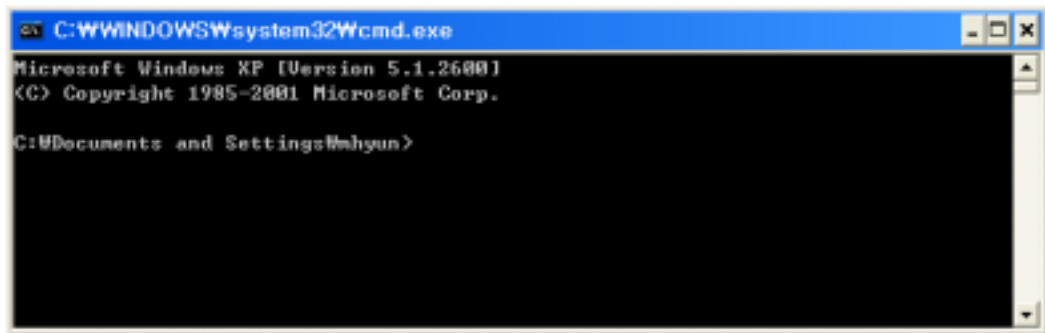
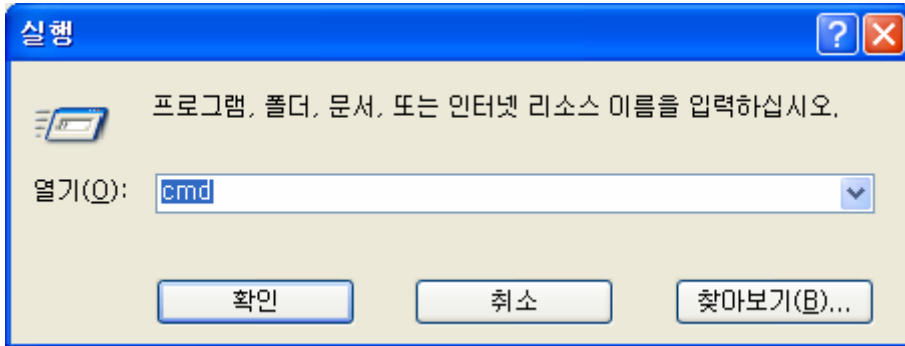
PC EZL - 200F IP 가 가

| | PC | EZL - 200F |
|--------------------|------------|------------|
| Local IP Address | 10.1.0.2 | 10.1.0.1 |
| Subnet Mask | 255.0.0.0 | 255.0.0.0 |
| Gateway IP Address | 10.1.0.254 | 10.1.0.254 |

ezConfig IP

1.1.2. telnet

[] [] 'cmd' 'command'

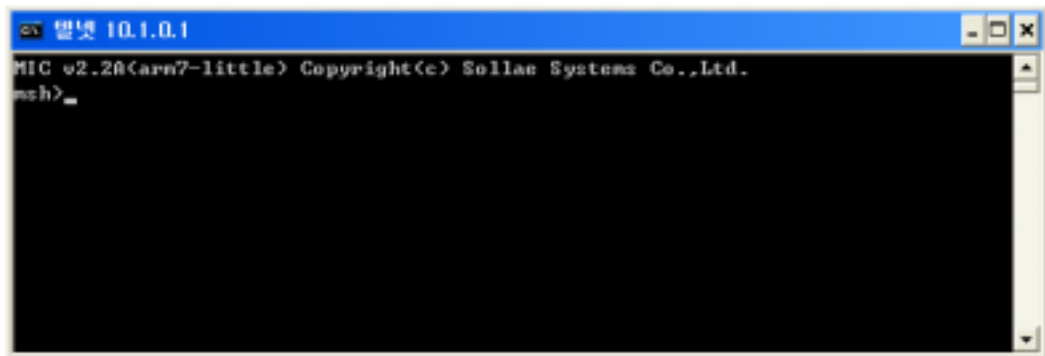


telnet

'telnet [LOCAL IP ADDRESS]'
[LOCAL IP ADDRESS] 1.1.1

EZL-200F IP

) telnet 10.1.0.1

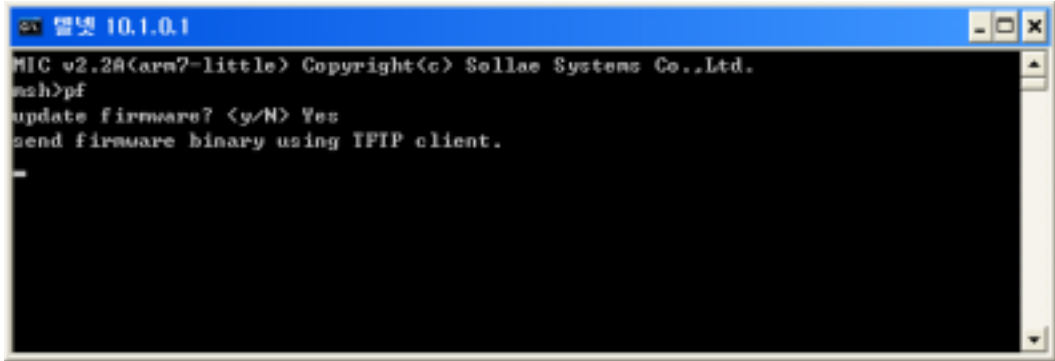


1.1.3.

telnet

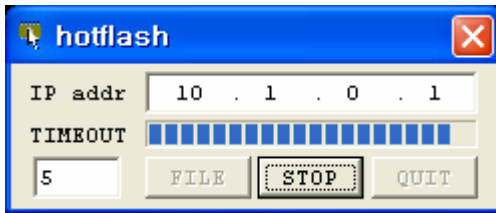
'pf'

. 'pf' 가
'y' . 'n'



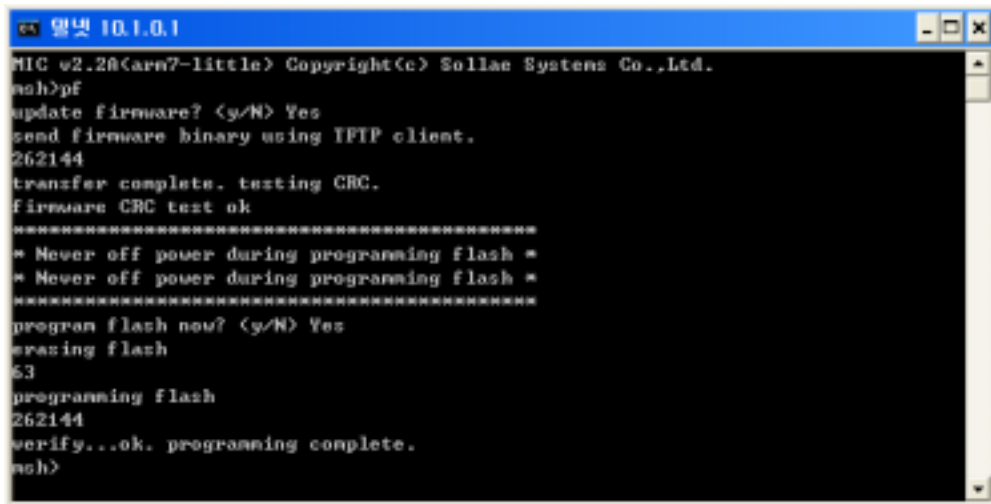
1.1.4. hotflash

1.1.3 가 hotflash . Hotflash EZL -
200F IP [FILE]
[SEND]



hotflash

'y' 가 EZL-200F



1.1.5.

EZL-200F
가 .

☞ *ezConfig* []

☞ 가 .

1.2.

(ISP)

EZL-200F ISP
 ISP

1.2.1.

EZL-200F PC , Teraterm Pro

| | |
|--------------|----------------|
| Baudrate | 115200 bps |
| Data bits | 8 bit |
| Stop bit | 1 |
| Parity | No parity |
| Flow control | No flowcontrol |

1.2.2. ISP

EZL-200F RJ45

가 .

가 .

가 EZL-200F가 ISP

..


```
Tera Term - COM1 VT
File Edit Setup Control Window Help
100 EZL-ARM7 serial boot loader v1.0a Sollae Systems
p
ID CODE: BF / D6
200 ready. send 256K code block.
00040000
201 testing CRC.
102 CRC OK.
202 programming flash.
* erasing flash *
003F
* programming flash *
00040000
* verify flash *
* verify ok *
101 programming OK.
```

1.2.4.

EZL-200F

가

☞ *ezConfig* []

☞ 가