



About

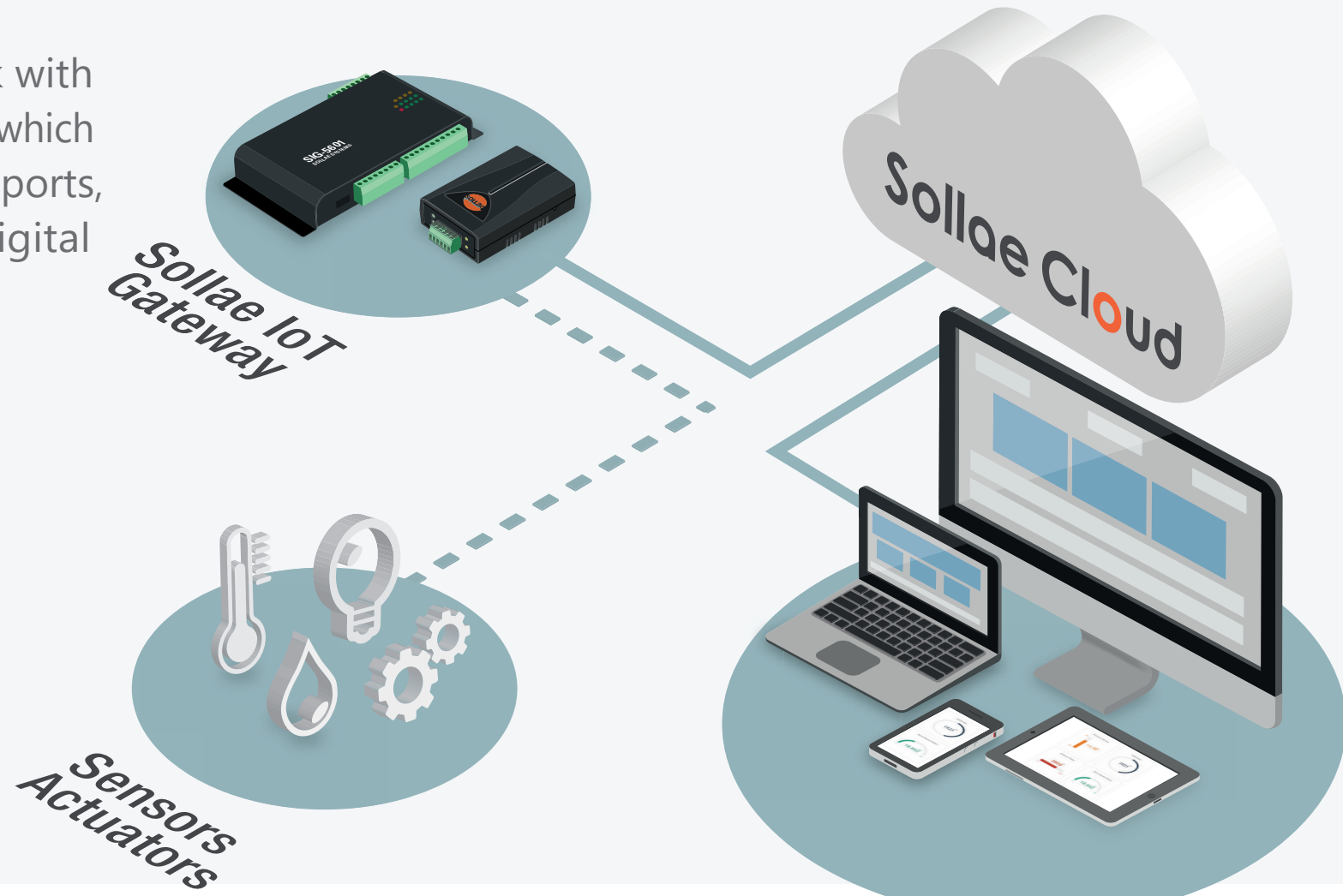
Sollae Cloud

What is Sollae Cloud?

Sollae Cloud is an IoT Cloud that acts as a hub between users and Sollae devices.

With Sollae devices and Sollae Cloud, the data from various sensors or devices in multiple locations can be collected in one place, allowing users to monitor and control safely.

Cloud is designed to work with Sollae IoT Gateway devices which have built-in analog input ports, digital input ports, and digital output ports.



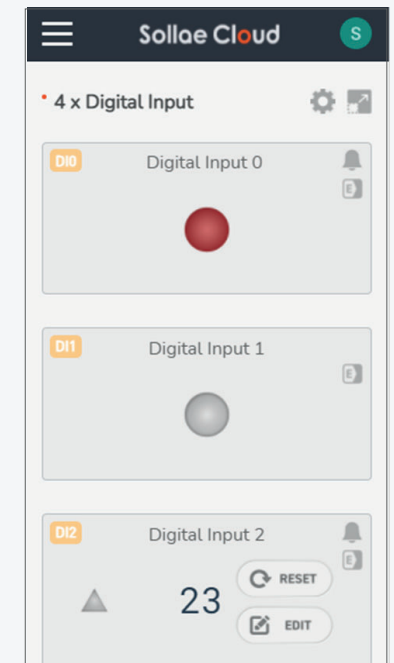
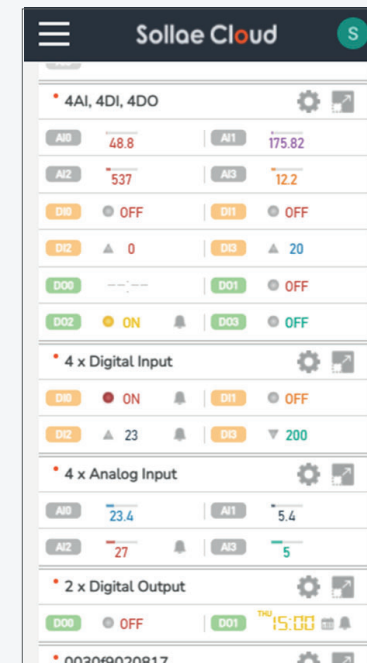
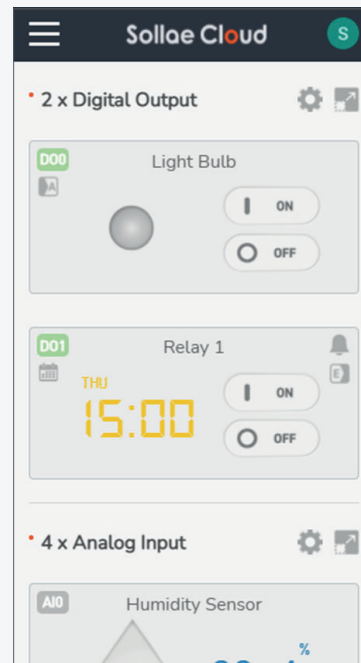
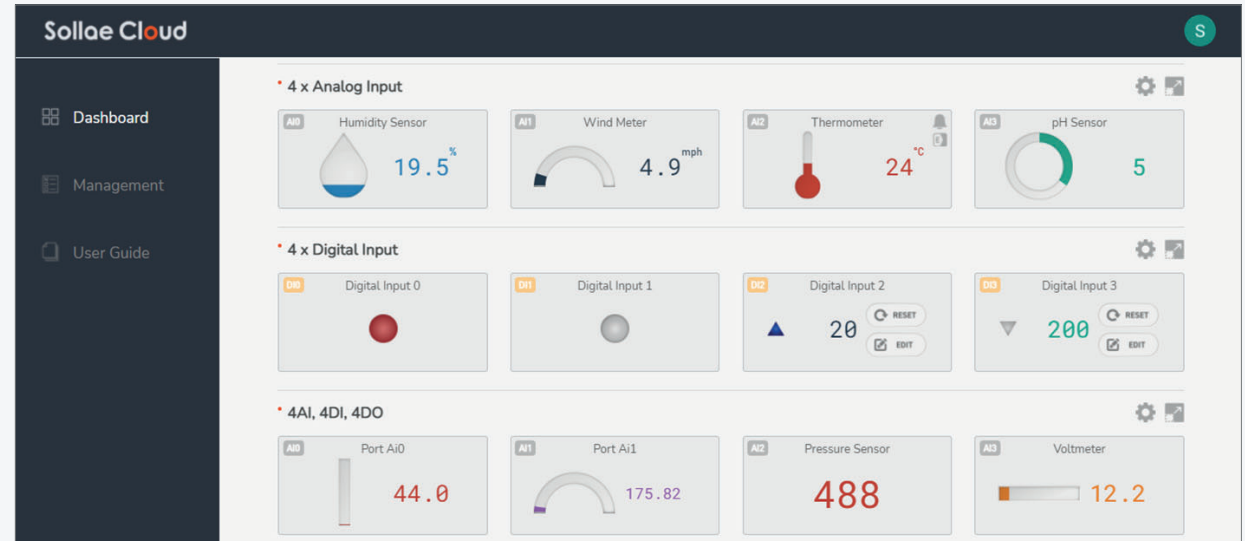
How does it work?

You can easily access the Cloud via your browser anytime, anywhere to check your data, or set up an automated system.

With the help of Sollae Cloud, you can remotely monitor/control your devices, configure them, and a lot more.

All you need to do is access the Cloud through your browser to check your data.

In addition, with the help of Sollae Cloud, you can remotely monitor your devices, configure them, and many more.



Main features



Collect the data you need

Get data from various kinds of sensors and equipment



Control from Anywhere

Allow you to remotely control relays in your system



Real-time Monitoring

Data is updated in real-time



Scheduled Automation

Schedule your system to make it work automatically



User-defined Event

Be informed and reactive to your devices' operation



Event-based Control

Control your relays in response to the defined events



Alarm

Quickly aware of devices' operating events via alarm effects



User-friendly Web Interface

Easy to customize with many widgets and themes



Security

All transmitted data is encrypted



Reliable

Offer a 24/7 operating service, with a high level of reliability

Various widgets

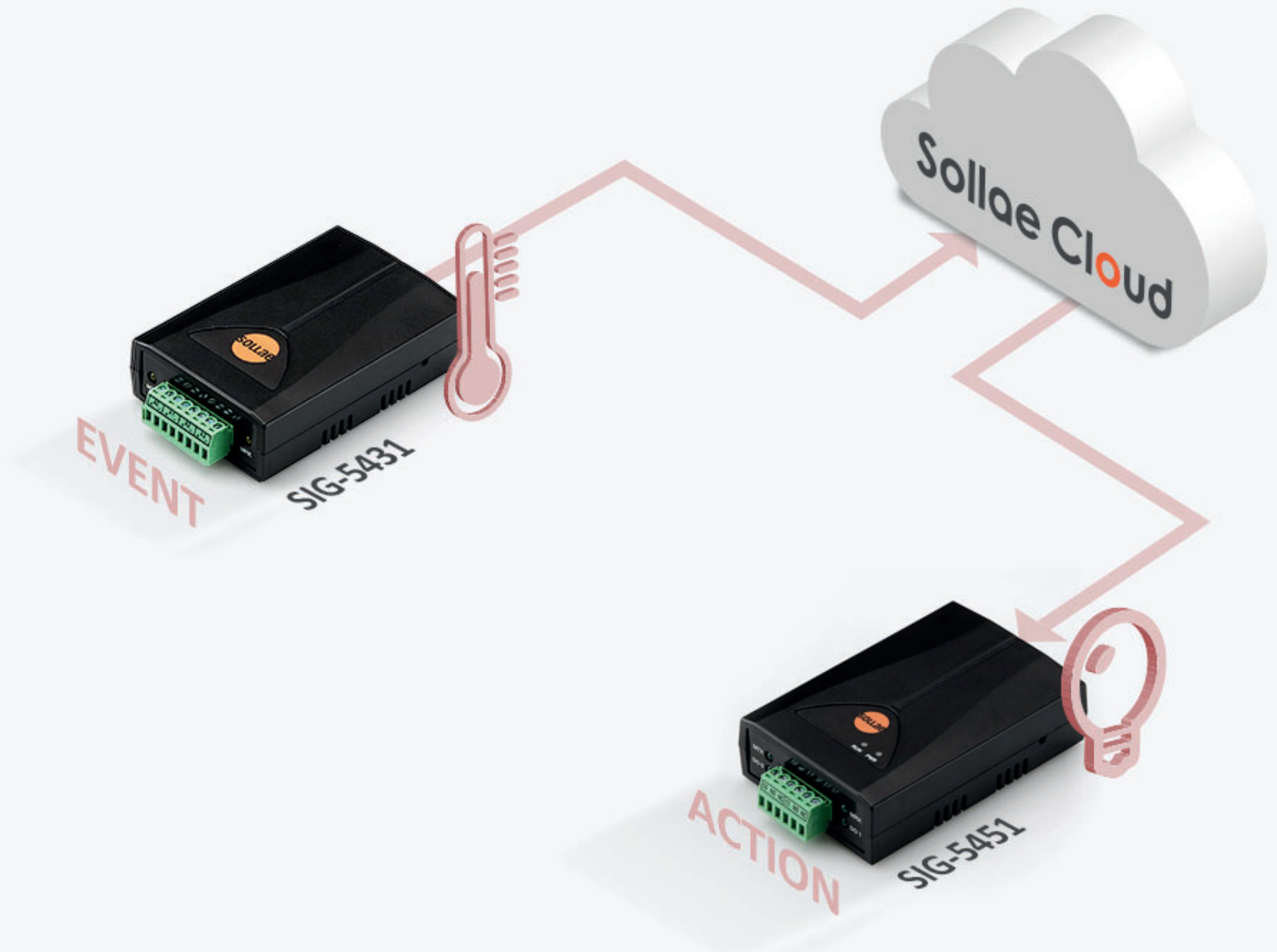
Thermometers, water drops, progress bar, LEDs, etc. are available.





Event | Alarm

Visualization and sound effect on the web to inform users when sensor values/digital input states change.



Event | Event-based Action

Relay control on digital output port products when sensor values/digital input states change.



Counter

Set UP or Down counter to watch the digital input signal's state transition.



Remote Control

Send commands from Sollae Cloud to remotely control the digital output port.



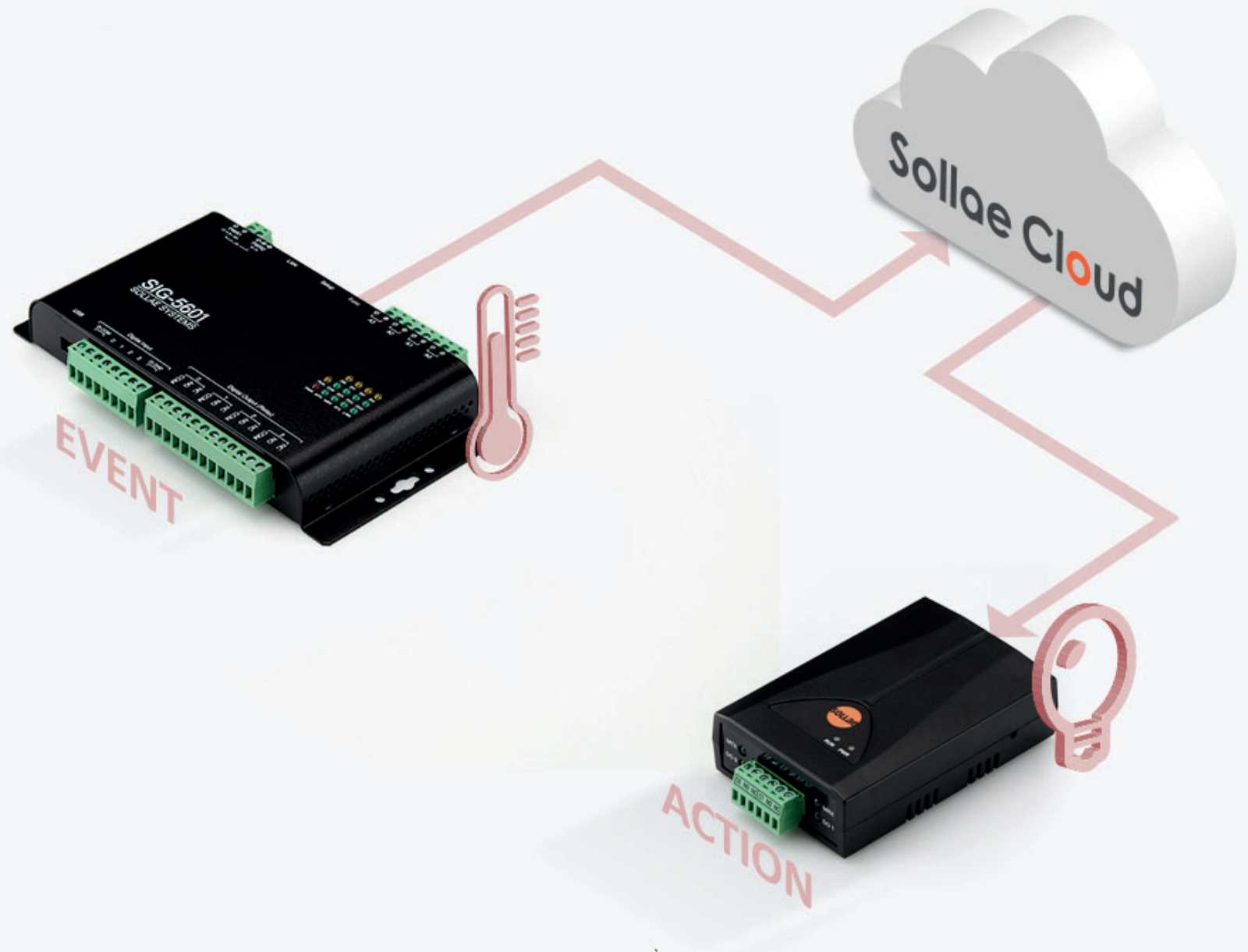
Output Control Methods | Control via Web

Control by interacting with buttons via Sollae Cloud web app.



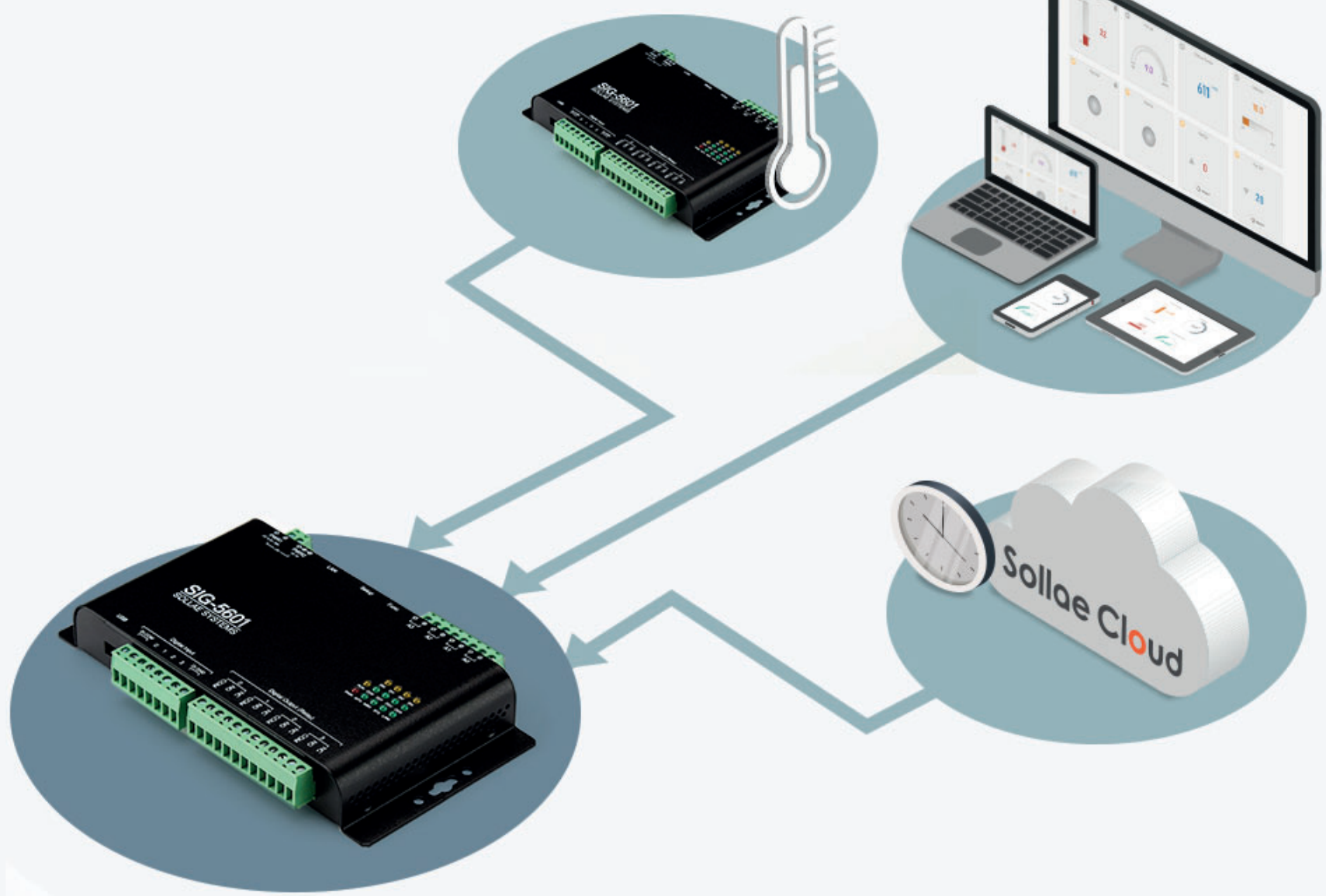
Output Control Methods | Control via Schedule

Set up a schedule to control the output port automatically.



Output Control Methods | Control via Event-based Action

Use the operating condition of sensor values or digital input states to control the output port.



Multi-controlling

Control an output port anywhere, anytime, from multiple places, by different methods such as via web, schedule, or event-based action.



About

Sollae IoT Gateway

Feature Comparison between Sollae IoT Gateway products

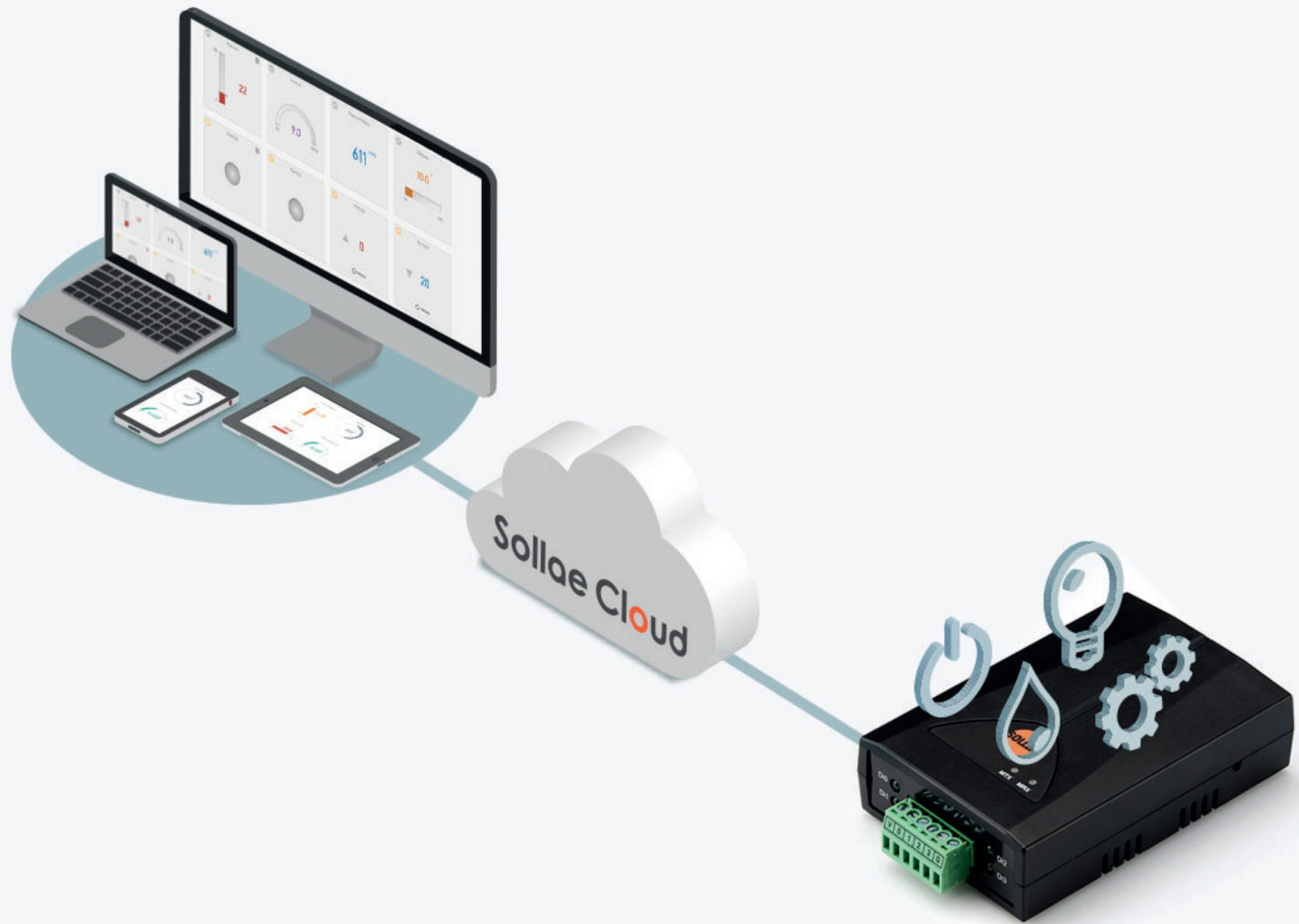
	SIG-5431	SIG-5441	SIG-5451	SIG-5601
Real-time Monitoring	●	●	●	●
Remote Control	—	—	●	●
Counter Function	—	●	—	●
Scheduled Automation	—	—	●	●
User-defined Event	●	●	●	●
Event-based Action	—	—	●	●
Alarm	●	●	●	●



SIG-5431

Analog Input I/O Gateway

Monitor analog sensor values from anywhere.



SIG-5441

Digital Input I/O Gateway

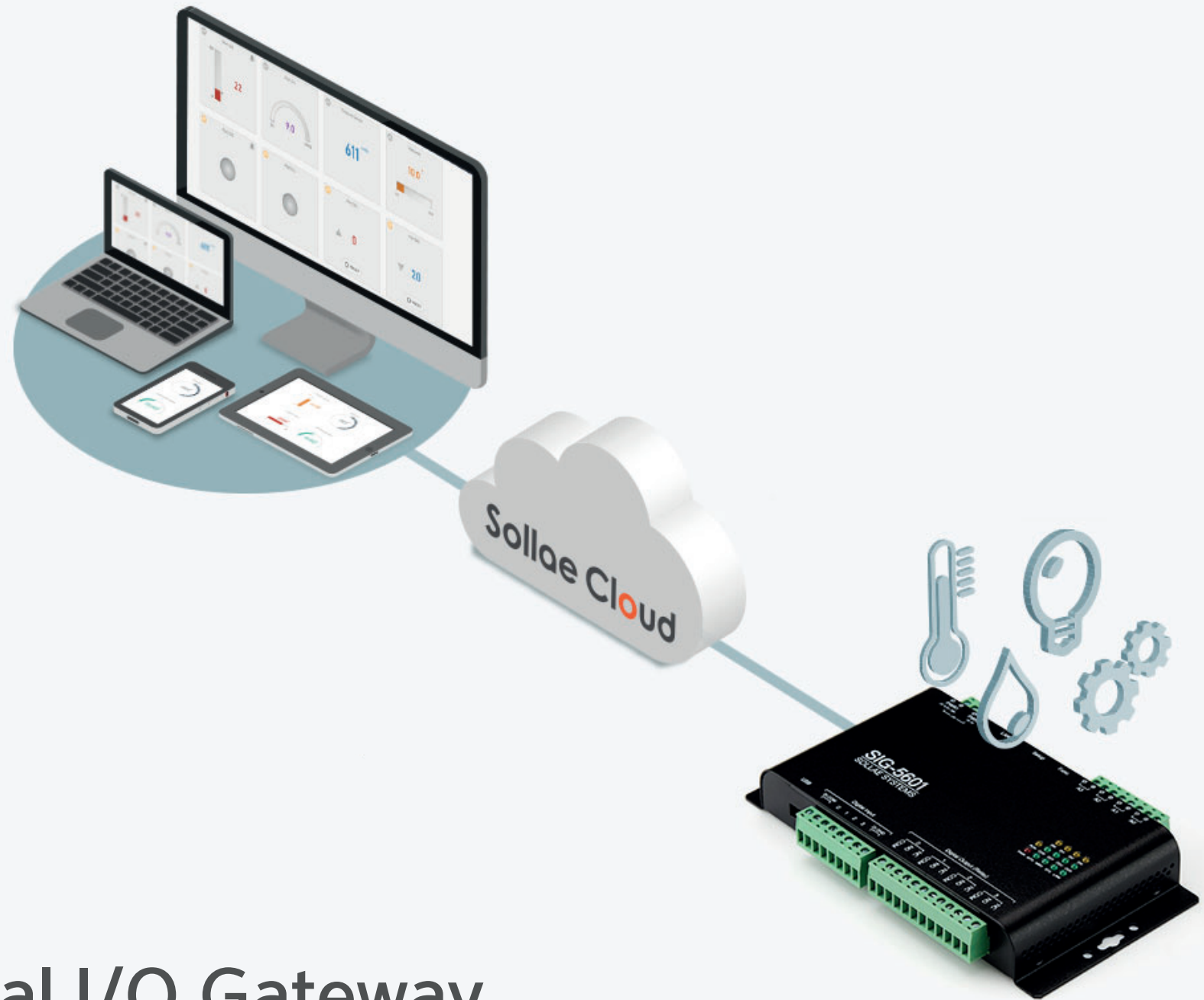
Detect On/Off from anywhere.



SIG-5451

Remote Output Controller

Control output ports from anywhere.



SIG-5601

Analog Digital I/O Gateway

Monitor the analog/digital sensor value and control the output port from anywhere.